

ABBREVIATION LEGEND	
AV	AIR/VAPOUR
ADH	ADHESIVE
AF	ABOVE FINISH FLOOR
ALT	ALTERNATE
ALUM	ALUMINUM
ANOD	ANODIZED
APPROX	APPROXIMATE
BD	BOARD
BF	BARRIER FREE
BLDG	BUILDING
CLG	CEILING
CMU	CONCRETE MASONRY UNIT
COL	COLUAM
CONC	CONCRETE
CONT	CONTINUOUS
CORR	CORRIDOR
CTG	CHANGING TABLE
DEG (°)	DEGREE
DF	DRINKING FOUNTAIN
dia (ø)	DIAMETER
DWG	DRAWING
DM	DEPTH
DO	DOOR OPERATOR
DP	DEEP
DRY	DRYER (CLOTHES)
DS	DOWNSPOUT
DW	DISHWASHER
DWGS	DRAWINGS
EACH	EACH FACE
ES	EACH SIDE
EW	EACH WAY
ELC	ELECTRICAL
ELEV (EL)	ELEVATION
EQ	EQUAL
EXP	EXPOSED
EXT	EXTERIOR
FD	FLOOR DRAIN
FDTN	FOUNDATION
FE	FIRE EXTINGUISHER
FEC	FIRE EXTINGUISHER CABINET
FL (FLR)	FLOOR
FDC	FACE OF CURB
FP	FACE PLATE
FRG	FIRE RESISTIVE GLAZING
FRP	FIBER REINFORCED PLASTIC
FT	FLOORING TRANSITION STRIP
FTG	FOOTING
GA	GAUGE
GB	GRAB BAR
GP	GLASS PANEL
GL	GLASS
GLUM	GLUE LAMINATED
GR	GRADE
GWB	GYPSUM WALL BOARD
HCW	HOLLOW CORE WOOD
HD	HAND DRYER
HM	HOLLOW METAL
HORIZ	HORIZONTAL
HSS	HOLLOW STRUCTURAL SECTION
HWT	HOT WATER TANK
HM	INSULATED HOLLOW METAL
INSUL	INSULATION
INT	INTERIOR
JT	JOINT
LAV	LAVATORY
LG	LONG
M	METER
MAX	MAXIMUM
MD	MEDIUM DENSITY FIBERBOARD
MECH	MECHANICAL

ABBREVIATION LEGEND	
MEZZ	MEZZANINE
MH	MANHOLE
MI	MIRROR
MNL	MINIMUM
MISC	MISCELLANEOUS
mm	MILLIMETERS
MR	MID RACK
MS	MID SINK
MW	MICROWAVE
NIC	NOT IN CONTRACT
NO (N)	NUMBER
NTS	NOT TO SCALE
OC	ON CENTER
OD	OUTSIDE DIAMETER
OSB	ORIENTED STRAND BOARD
OWSJ	OPEN WEB STEEL JOIST
PERIM	PERIMETER
POLY	POLYETHYLENE
PP	POWER POLE
PROJ	PROJECTION
PSF	PRESSED STEEL FRAME
PT	PAPER TONEL DISPENSER
PTD	PAINTED
PVC	POLYVINYL CHLORIDE
R	RANGE
REW	REINFORCED WITH
RAD (R)	RADIUS
RD	ROOF DRAIN
REF	REFERENCED
REIN	REINFORCED
REQD	REQUIRED
REV	REVISION
RM	ROOM
RO	ROUGH OPENING
RTU	ROOF TOP UNIT
RNL	RAIN WATER LEADER
SC	SHOWER CURTAIN
SCW	SOLID CORE WOOD
SD	SOAP DISPENSER
SECT	SECTION
SM	SIMILAR
SP	SANITARY NAPKIN DISPOSAL
SPEC	SPECIFICATION
SQ	SQUARE
SS	STAINLESS STEEL
ST	STAINED
STC	SOUND TRANSMISSION CLASS
STD	STANDARD
STH	SHEATHING
STRUCT	STRUCTURAL
SUSP	SUSPENDED
SYMM	SYMMETRICAL
T&G	TONGUE & GROOVE
TIO	TOP OF
TB	TRACK BOARD
TBD	TO BE DETERMINED
TCC	TOP OF CURB
TOS	TOP OF SLAB
TP	TOILET/WASHROOM PARTITIONS
TS	TEMPERED SAFETY
TTV	TOILET TISSUE HOLDER
TV	TELEVISION
TYP	TYPICAL
UIS	UNDERSIDE
UNO	UNLESS NOTED OTHERWISE
VB	VAPOUR BARRIER
VD	VENDING MACHINE
VERT	VERTICAL
VEST	VESTIBULE
W	WIDE
W	WITH
W/O	WITHOUT
WC	WATER CLOSET
WO	WOOD
WS	WOOD SOFFIT
WWM	WELDED WIRE MESH

ARCHITECTURAL SYMBOLS	
GRID LINES	
	GRID NUMBER OR LETTER DESIGNATION
EXISTING GRID	
ROOM TAG	
	ROOM NAME ROOM NUMBER ROOM AREA
AREA TAG	
	AREA NAME 150 m2
DOOR TAG	
	DOOR OPENING NUMBER DOOR OCCURS
CEILING TAG	
	CEILING TYPE CEILING HEIGHT
PARTITION TAG	
FLOOR TAG	
WINDOW TAG	
GLAZING TYPE	
KEYNOTE TAG	
FLOOR FINISH TAG	
TRANSITION STRIP	
CASEWORK TAG	
WASHROOM ACCESSORIES	
FURNITURE TAG	
DETAIL CALLOUTS	
	DETAIL NUMBER SHEET ON WHICH DETAIL IS SHOWN
EXTERIOR ELEVATIONS	
	ELEVATION NUMBER SHEET ON WHICH ELEVATION IS SHOWN
INTERIOR ELEVATIONS	
	ELEVATION NUMBER SHEET ON WHICH ELEVATION IS SHOWN
MILLWORK ELEVATIONS	
	ELEVATION NUMBER SHEET ON WHICH ELEVATION IS SHOWN
BUILDING SECTIONS	
	SECTION NUMBER SHEET ON WHICH SECTION IS SHOWN
WALL SECTIONS	
	SECTION NUMBER SHEET ON WHICH SECTION IS SHOWN
FLOOR ELEVATION	
	FLOOR OR ROOF LEVEL NAME VERTICAL ELEVATION
NORTH ARROW	
DRAWING REVISION	
MATCH LINE	
BREAK LINE	

GENERAL NOTES	
1.	PERFORM ALL WORK IN ACCORDANCE WITH THE NATIONAL BUILDING CODE 2020.
2.	DO NOT SCALE DRAWINGS. THE CONTRACTOR SHALL VERIFY ALL DIMENSIONS AND NOTIFY ARCHITECT OF ANY DISCREPANCIES BEFORE PROCEEDING WITH THE WORK.
3.	ARCHITECTURAL DRAWINGS TO BE READ IN CONJUNCTION WITH STRUCTURAL, MECHANICAL, ELECTRICAL, INTERIOR DESIGN, CIVIL AND LANDSCAPE DRAWINGS. CONTRACTOR TO NOTIFY ARCHITECT OF ANY CONFLICTS OR DISCREPANCIES.
4.	ALL WORK TO BE PERFORMED IN ACCORDANCE WITH GOOD BUILDING PRACTICES. CONTRACTOR TO CAREFULLY INSPECT THE SITE OF WORK AND BE FULLY INFORMED OF CONDITIONS AND LIMITATIONS.
5.	CONTRACTOR TO CONFIRM ALL DIMENSIONS ON SITE AND IMMEDIATELY REPORT ANY DISCREPANCIES TO THE DESIGN TEAM PRIOR TO PROCEEDING.
6.	CONTRACTOR TO CONFIRM ALL ELEVATIONS INCLUDING SUB LANDSCAPING CONC. WALLS ON SITE. REPORT ANY VARIANCES TO CONSULTANT.
7.	CONTRACTOR TO INSTALL MANUFACTURED ITEMS IN STRICT ACCORDANCE WITH THE MANUFACTURER'S WRITTEN INSTRUCTIONS AND RECOMMENDATIONS. COMPLETE WITH ALL FASTENERS/CONNECTIONS AS REQUIRED FOR COMPLETE INSTALLATION.
8.	CONTRACTOR IS RESPONSIBLE TO CONFIRM AND PROVIDE STORM, SANITARY, WATER, ELECTRICITY, AND GAS REQUIREMENTS AND INSTALL AS PER APPLICABLE CODES AND LOCAL INSPECTOR.
9.	PROVIDE MIN. 2% SLOPE FOR ALL EXTERIOR CONC. SLABS U.N.O. PROVIDE MINIMUM 2% SLOPE AWAY FROM THE BUILDING FOR ALL EXTERIOR DRAINAGE U.N.O. PROVIDE MINIMUM 2% SLOPE AWAY FROM THE BUILDING FOR ALL EXTERIOR DRAINAGE U.N.O. OR DETAIL TO EXIST. SITE CONDITIONS. CONFIRM WITH CONSULTANT.
10.	WALLS NOT LOCATED BY DIMENSIONS ARE ASSUMED TO BE CENTERED ON GRID LINES. ALL DIMENSIONS ARE FROM FACE OF METAL STUD OR FACE OF MASONRY U.N.O.
11.	ALL MASONRY WALLS TO EXTEND TO US OF ROOF DECK UNLESS OTHERWISE NOTED.
12.	DOOR AND WINDOW SIZES ARE NOMINAL. CONTRACTOR TO INSTALL DOORS AND FRAMES WITH A CLEAR DIMENSION OF 10mm IN METALS STUD WALLS AND 20mm IN CONC. BLOCK WALLS BETWEEN THE FRAME AND THE NEAREST ADJACENT WALL UNLESS NOTED OTHERWISE ABOVE U.N.O.
13.	TO MAINTAIN THE INTEGRITY OF THE FIRE SEPARATION BEHIND RECESSED WALL MOUNTED ITEMS, TYPE 'X' GYPSUM BOARD IS NOT REQUIRED ON INSIDE FACE OF VOID SPACES UNLESS PART OF A RATED PARTITION ASSEMBLY OR STC RATING.
14.	USE TYPE 'X' GWB ON ALL FIRE-RATED GWB PARTITIONS.
15.	ALL RATED WALLS SHALL BE CONTINUOUS & FRAMED TO US OF FLOOR OR ROOF ASSEMBLY ABOVE U.N.O.
16.	PROVIDE DEFLECTION TRACK @ ALL INTERIOR PARTITIONS FRAMED TO US STRUCTURE.
17.	INSTALL GYPSUM BOARD OF APPROPRIATE THICKNESS TO MATCH ADJACENT WALL WHERE DIFFERENT GYPSUM THICKNESSES ARE USED.
18.	WHERE MECHANICAL DUCTS AND ELECTRICAL CONDUIT PENETRATE FIRE SEPARATIONS OR WALLS WHICH ARE CONSTRUCTED TO US OF STRUCTURE, PROVIDE FIRESTOPPING AND SMOKE SEALS AT PENETRATIONS TO MAINTAIN FRR NOTED ON PARTITION TYPES SCHEDULE. PROVIDE SOUND SEALS TO MEET STC RATINGS NOTED ON PARTITION TYPES SCHEDULE.
19.	GYPSUM BOARD IS NOT REQUIRED ON INSIDE FACE OF VOID SPACES UNLESS PART OF A RATED PARTITION ASSEMBLY OR STC RATING.
20.	WHEN INSTALLING PLUMBING, INSTALL GASKETS AT ALL SUPPORT CONNECTIONS. PIPES MUST NOT COME INTO DIRECT CONTACT WITH METAL STUDS, METAL SUSPENSION SYSTEMS, OR CONCRETE FLOORS.
21.	FURN IN ALL EXPOSED MECH. AND ELECT. DUCTS AND PIPING WITHIN PUBLIC SPACES.
22.	CONTRACTOR ASSUMES COMPLETE RESPONSIBILITY TO ENSURE ALL FUTURES & EQUIP. SUPPLIED UNDER THIS CONTRACT ARE C.S.A. APPROVED.
23.	PROVIDE ALL FRAMING, BLOCKING AS REQUIRED TO ENSURE PROPER SECUREMENT OF MATERIALS, EQUIPMENT, ACCESSORIES, ETC. PROVIDE BACKING FOR ITEMS NOTED AS: IN CONTRACT (I.C.), NOT IN CONTRACT (N.I.C.), AND OWNER SUPPLIED CONTRACTOR INSTALLED (O.S.C.I.). PROVIDE BLOCKING IN METAL STUD PARTITIONS BEHIND ALL WALL MOUNTED ITEMS. ALSO REFER TO MECHANICAL AND ELECTRICAL DRAWINGS.
24.	PROVIDE FLASHING OVER ALL EXTERIOR DOORS AND WINDOWS.
25.	MAINTAIN INTEGRITY OF THE VAPOUR/ AIR BARRIER MEMBRANE IN THE EXTERIOR WALLS & ROOF STRUCTURE. ALL MEMBRANES ARE TO BE CONTINUOUS & HAVE A MINIMUM OVERLAP OF 200mm AT ALL PARAPETS, FLASHINGS, JOINTS, CHANGES IN DIRECTION, WINDOWS, DOORS, ETC.
26.	PROVIDE CONTINUOUS ROD AND SEALANT AT ALL JUNCTIONS OF DISSIMILAR MATERIALS, CONTROL JOINTS AND OTHER LOCATIONS INDICATED.
27.	ALL MATERIALS TO BE PRIMED AND PAINTED U.N.O.
28.	MAINTAIN SAFE ACCESS TO ALL REQUIRED EXITS AT ALL TIMES.
29.	PAINT ALL EXPOSED STRUCTURE AND MECHANICAL DUCTS. DO NOT PAINT ACOUSTIC DECK. REFER TO FINISH SCHEDULE.
30.	CONTRACTOR RESPONSIBLE TO COORDINATE ALL INSTANCES OF DETAILS NOTED AS TYPICAL (TYP.).
31.	ROTATIONAL ORIENTATION OF DETAILS MAY VARY.
32.	ALL APPLIANCES ARE SUPPLIED AND INSTALLED BY OWNER.
33.	PATCH AND MAKE GOOD ALL EXISTING AND NEW SURFACES DAMAGED DURING THE COURSE OF WORK.
34.	PROVIDE TYPE 'X' GYPSUM BOARD IN STUD CAVITIES BEHIND RECESSED WALL MOUNTED ITEMS TO MAINTAIN INTEGRITY OF REQUIRED FIRE SEPARATIONS.
35.	PROVIDE ALL FRAMING, BLOCKING AS REQUIRED TO ENSURE PROPER SECUREMENT OF MATERIALS, EQUIPMENT, ACCESSORIES, ETC.
36.	ITEMS SHOWN ON THE DRAWINGS, BUT NOT SPECIFIED ARE TO BE FURNISHED AND INSTALLED BY THE GENERAL CONTRACTOR UNLESS NOTED OTHERWISE. ALL SUCH ITEMS SHALL BE OF A QUALITY LEVEL CONSISTENT WITH THE GENERAL QUALITY LEVEL OF THE CONTRACT REQUIREMENTS.

CONSTRUCTION ASSEMBLIES LEGEND	
EXTERIOR WALL TYPES	ROOF TYPES
WALL ASSEMBLY EW1: Ref=35 <ul style="list-style-type: none">METAL CLADDING AS PER SCHEDULE AND ELEVATIONSHORIZONTAL 19x49 STRAPPING @ 400 O.C.VERTICAL 38x96 STRAPPING @ 800 O.C.FASTENED TO OUTER CHORD OF LARSEN TRUSSSELF ADHERED WEATHER BARRIER - VAPOUR PERMEABLE16mm EXTERIOR GRADE PLYWOOD300mm DEEP LARSEN TRUSS @ 600 O.C.OUTER CHORD 3x6x313x30x260mm PLYWOOD GUSSETS @ 200 O.C.	BASIC ROOF ASSEMBLY R1: Ref=35 <ul style="list-style-type: none">2 PLY SBS ROOFING, TORCHED TO76mm STONEWOOL INSULATION WITH A RIGID SURFACE IMPREGNATED WITH A BITUMEN LAYER, ADHERED TO200mm (2-100mm) POLYISOCYANURATE, ADHERED TOSELF ADHERED WEATHER BARRIER MEMBRANE19mm EXTERIOR GRADE PLYWOOD SHEATHING38mm TAG WOOD DECKING, CLEAR FINISHSLOPED GULLUM STRUCTURE, CLEAR FINISH
WALL ASSEMBLY EW2: Ref=35 <ul style="list-style-type: none">80x184mm CEDAR WOOD FINIS AS PER ELEVATIONS, CONNECTION DETAIL 1/A500SAME ASSEMBLY AS EW1	BASIC ROOF ASSEMBLY R2: Ref=35 <ul style="list-style-type: none">2 PLY SBS ROOFING, TORCHED TO76mm STONEWOOL INSULATION WITH A RIGID SURFACE IMPREGNATED WITH A BITUMEN LAYER, ADHERED TO200mm (2-100mm) POLYISOCYANURATE, ADHERED TOSELF ADHERED WEATHER BARRIER MEMBRANE19mm TYPE 'X' GLASS MAT FACED GYPSUM BOARD38mm STEEL DECKINGSLOPED GULLUM STRUCTURE, CLEAR FINISH
WALL ASSEMBLY EW3: Ref=35 <ul style="list-style-type: none">METAL CLADDING AS PER SCHEDULE AND ELEVATIONSHORIZONTAL 19x49 STRAPPING @ 400 O.C.VERTICAL 38x96 STRAPPING @ 800 O.C.FASTENED TO OUTER CHORD OF LARSEN TRUSSSELF ADHERED WEATHER BARRIER - VAPOUR PERMEABLE16mm EXTERIOR GRADE PLYWOOD300mm DEEP LARSEN TRUSS @ 600 O.C.OUTER CHORD 3x6x313x30x260mm PLYWOOD GUSSETS @ 200 O.C.300mm SEMI RIGID INSULATIONSELF ADHERED AIR/VAPOUR BARRIER MEMBRANE16mm EXTERIOR GRADE PLYWOOD SHEATHING194mm STUD WALL STUDS & SPACING AS PER STRUCTURAL16mm GYPSUM BOARD, PAINTED	MAIN CANOPY ROOF ASSEMBLY R3: <ul style="list-style-type: none">2 PLY SBS ROOFING, TORCHED TO15mm TYPE 'X' GLASS MAT FACED GYPSUM BOARD16mm EXTERIOR GRADE PLYWOOD SHEATHING38x184mm JOISTS @ 600mm O.C.STRUCTURAL SUPPORT WITH A 2% SLOPESOFFIT ASSEMBLY AS NOTED
WALL ASSEMBLY EW4: Ref=35 <ul style="list-style-type: none">80x184mm CEDAR WOOD FINIS AS PER ELEVATIONS, CONNECTION DETAIL 1/A500SAME ASSEMBLY AS EW2	SECONDARY CANOPY ROOF ASSEMBLY R4: <ul style="list-style-type: none">2 PLY SBS ROOFING, TORCHED TO15mm TYPE 'X' GLASS MAT FACED GYPSUM BOARD16mm EXTERIOR GRADE PLYWOOD SHEATHINGWOOD WEDGES TO FORM A 1.5% SLOPE16mm EXTERIOR GRADE PLYWOOD SHEATHING38x184mm JOISTS @ 600mm O.C. AND STRUCTURAL SUPPORTSOFFIT AS NOTED
FOUNDATION WALL ASSEMBLY FW1: <ul style="list-style-type: none">50mm CONCRETE FACED RIGID INSULATION TO 610mm BELOW GRADE150mm RIGID INSULATIONWATER PROOFINGCONCRETE RETAINING WALL, (PAINTED - INTERIOR FACE)	FOUNDATION WALL ASSEMBLY FW2: <ul style="list-style-type: none">50mm CONCRETE FACED RIGID INSULATION TO 610mm BELOW GRADE150mm RIGID INSULATIONWATER PROOFINGFACE OF CONCRETE SLAB THICKENING
INTERIOR PARTITION TYPES	FLOOR TYPES
PARTITION ASSEMBLY PW1: <ul style="list-style-type: none">FACADE CONSTRUCTION AS PER ELEVATIONSSELF ADHERED WEATHER BARRIER - VAPOUR PERMEABLE16mm EXTERIOR GRADE PLYWOOD300mm DEEP LARSEN TRUSS @ 600 O.C. (SEE EW1 FOR DESCRIPTION)16mm EXTERIOR GRADE PLYWOOD SHEATHING16mm GLASS MAT REINFORCED GYPSUM BOARDTORCH-ON ROOFING MEMBRANE	BASIC FLOOR ASSEMBLY F1: <ul style="list-style-type: none">FLOORING AS PER SCHEDULE15mm TYPE 'X' GYPSUM BOARD12mm STEEL STUDS (25ga L240) AT 400mm O.C.100mm ACOUSTIC BATT INSULATION15mm TYPE 'X' GYPSUM BOARD
PARTITION ASSEMBLY P1: <ul style="list-style-type: none">15mm TYPE 'X' GYPSUM BOARD150mm STEEL STUDS (25ga L240) AT 400mm O.C.15mm TYPE 'X' GYPSUM BOARD	PARTITION ASSEMBLY P2: <ul style="list-style-type: none">15mm TYPE 'X' GYPSUM BOARD150mm STEEL STUDS (25ga L240) AT 400mm O.C.15mm TYPE 'X' GYPSUM BOARD
PARTITION ASSEMBLY P3: <ul style="list-style-type: none">15mm TYPE 'X' GYPSUM BOARD150mm STEEL STUDS (25ga L240) AT 400mm O.C.15mm TYPE 'X' GYPSUM BOARD	PARTITION ASSEMBLY P4: <ul style="list-style-type: none">15mm TYPE 'X' GYPSUM BOARD150mm STEEL STUDS (25ga L240) AT 400mm O.C.15mm TYPE 'X' GYPSUM BOARD
PARTITION ASSEMBLY P5: <ul style="list-style-type: none">15mm TYPE 'X' GYPSUM BOARD150mm STEEL STUDS (25ga L240) AT 400mm O.C.15mm TYPE 'X' GYPSUM BOARD	PARTITION ASSEMBLY P6: <ul style="list-style-type: none">15mm TYPE 'X' GYPSUM BOARD150mm STEEL STUDS (25ga L240) AT 400mm O.C.15mm TYPE 'X' GYPSUM BOARD
PARTITION ASSEMBLY P7: <ul style="list-style-type: none">15mm TYPE 'X' GYPSUM BOARD150mm STEEL STUDS (25ga L240) AT 400mm O.C.15mm TYPE 'X' GYPSUM BOARD	PARTITION ASSEMBLY P8: <ul style="list-style-type: none">15mm TYPE 'X' GYPSUM BOARD150mm STEEL STUDS (25ga L240) AT 400mm O.C.15mm TYPE 'X' GYPSUM BOARD
PARTITION ASSEMBLY P9: <ul style="list-style-type: none">15mm TYPE 'X' GYPSUM BOARD150mm STEEL STUDS (25ga L240) AT 400mm O.C.15mm TYPE 'X' GYPSUM BOARD	PARTITION ASSEMBLY P10: <ul style="list-style-type: none">15mm TYPE 'X' GYPSUM BOARD150mm STEEL STUDS (25ga L240) AT 400mm O.C.15mm TYPE 'X' GYPSUM BOARD
PARTITION ASSEMBLY P11: <ul style="list-style-type: none">15mm TYPE 'X' GYPSUM BOARD150mm STEEL STUDS (25ga L240) AT 400mm O.C.15mm TYPE 'X' GYPSUM BOARD	PARTITION ASSEMBLY P12: <ul style="list-style-type: none">15mm TYPE 'X' GYPSUM BOARD150mm STEEL STUDS (25ga L240) AT 400mm O.C.15mm TYPE 'X' GYPSUM BOARD
PARTITION ASSEMBLY P13: <ul style="list-style-type: none">15mm TYPE 'X' GYPSUM BOARD150mm STEEL STUDS (25ga L240) AT 400mm O.C.15mm TYPE 'X' GYPSUM BOARD	PARTITION ASSEMBLY P14: <ul style="list-style-type: none">15mm TYPE 'X' GYPSUM BOARD150mm STEEL STUDS (25ga L240) AT 400mm O.C.15mm TYPE 'X' GYPSUM BOARD
PARTITION ASSEMBLY P15: <ul style="list-style-type: none">15mm TYPE 'X' GYPSUM BOARD150mm STEEL STUDS (25ga L240) AT 400mm O.C.15mm TYPE 'X' GYPSUM BOARD	PARTITION ASSEMBLY P16: <ul style="list-style-type: none">15mm TYPE 'X' GYPSUM BOARD150mm STEEL STUDS (25ga L240) AT 400mm O.C.15mm TYPE 'X' GYPSUM BOARD
PARTITION ASSEMBLY P17: <ul style="list-style-type: none">15mm TYPE 'X' GYPSUM BOARD150mm STEEL STUDS (25ga L240) AT 400mm O.C.15mm TYPE 'X' GYPSUM BOARD	PARTITION ASSEMBLY P18: <ul style="list-style-type: none">15mm TYPE 'X' GYPSUM BOARD150mm STEEL STUDS (25ga L240) AT 400mm O.C.15mm TYPE 'X' GYPSUM BOARD
PARTITION ASSEMBLY P19: <ul style="list-style-type: none">15mm TYPE 'X' GYPSUM BOARD150mm STEEL STUDS (25ga L240) AT 400mm O.C.15mm TYPE 'X' GYPSUM BOARD	PARTITION ASSEMBLY P20: <ul style="list-style-type: none">15mm TYPE 'X' GYPSUM BOARD150mm STEEL STUDS (25ga L240) AT 400mm O.C.15mm TYPE 'X' GYPSUM BOARD
PARTITION ASSEMBLY P21: <ul style="list-style-type: none">15mm TYPE 'X' GYPSUM BOARD150mm STEEL STUDS (25ga L240) AT 400mm O.C.15mm TYPE 'X' GYPSUM BOARD	PARTITION ASSEMBLY P22: <ul style="list-style-type: none">15mm TYPE 'X' GYPSUM BOARD150mm STEEL STUDS (25ga L240) AT 400mm O.C.15mm TYPE 'X' GYPSUM BOARD
PARTITION ASSEMBLY P23: <ul style="list-style-type: none">15mm TYPE 'X' GYPSUM BOARD150mm STEEL STUDS (25ga L240) AT 400mm O.C.15mm TYPE 'X' GYPSUM BOARD	PARTITION ASSEMBLY P24: <ul style="list-style-type: none">15mm TYPE 'X' GYPSUM BOARD150mm STEEL STUDS (25ga L240) AT 400mm O.C.15mm TYPE 'X' GYPSUM BOARD
PARTITION ASSEMBLY P25: <ul style="list-style-type: none">15mm TYPE 'X' GYPSUM BOARD150mm STEEL STUDS (25ga L240) AT 400mm O.C.15mm TYPE 'X' GYPSUM BOARD	PARTITION ASSEMBLY P26: <ul style="list-style-type: none">15mm TYPE 'X' GYPSUM BOARD150mm STEEL STUDS (25ga L240) AT 400mm O.C.15mm TYPE 'X' GYPSUM BOARD
PARTITION ASSEMBLY P27: <ul style="list-style-type: none">15mm TYPE 'X' GYPSUM BOARD150mm STEEL STUDS (25ga L240) AT 400mm O.C.15mm TYPE 'X' GYPSUM BOARD	PARTITION ASSEMBLY P28: <ul style="list-style-type: none">15mm TYPE 'X' GYPSUM BOARD150mm STEEL STUDS (25ga L240) AT 400mm O.C.15mm TYPE 'X' GYPSUM BOARD
PARTITION ASSEMBLY P29: <ul style="list-style-type: none">15mm TYPE 'X' GYPSUM BOARD150mm STEEL STUDS (25ga L240) AT 400mm O.C.15mm TYPE 'X' GYPSUM BOARD	PARTITION ASSEMBLY P30: <ul style="list-style-type: none">15mm TYPE 'X' GYPSUM BOARD150mm STEEL STUDS (25ga L240) AT 400mm O.C.15mm TYPE 'X' GYPSUM BOARD
PARTITION ASSEMBLY P31: <ul style="list-style-type: none">15mm TYPE 'X' GYPSUM BOARD150mm STEEL STUDS (25ga L240) AT 400mm O.C.15mm TYPE 'X' GYPSUM BOARD	PARTITION ASSEMBLY P32: <ul style="list-style-type: none">15mm TYPE 'X' GYPSUM BOARD150mm STEEL STUDS (25ga L240) AT 400mm O.C.15mm TYPE 'X' GYPSUM BOARD
PARTITION ASSEMBLY P33: <ul style="list-style-type: none">15mm TYPE 'X' GYPSUM BOARD150mm STEEL STUDS (25ga L240) AT 400mm O.C.15mm TYPE 'X' GYPSUM BOARD	PARTITION ASSEMBLY P34: <ul style="list-style-type: none">15mm TYPE 'X' GYPSUM BOARD150mm STEEL STUDS (25ga L240) AT 400mm O.C.15mm TYPE 'X' GYPSUM BOARD
PARTITION ASSEMBLY P35: <ul style="list-style-type: none">15mm TYPE 'X' GYPSUM BOARD150mm STEEL STUDS (25ga L240) AT 400mm O.C.15mm TYPE 'X' GYPSUM BOARD	PARTITION ASSEMBLY P36: <ul style="list-style-type: none">15mm TYPE 'X' GYPSUM BOARD150mm STEEL STUDS (25ga L240) AT 400mm O.C.15mm TYPE 'X' GYPSUM BOARD
PARTITION ASSEMBLY P37: <ul style="list-style-type: none">15mm TYPE 'X' GYPSUM BOARD150mm STEEL STUDS (25ga L240) AT 400mm O.C.15mm TYPE 'X' GYPSUM BOARD	PARTITION ASSEMBLY P38: <ul style="list-style-type: none">15mm TYPE 'X' GYPSUM BOARD150mm STEEL STUDS (25ga L240) AT 400mm O.C.15mm TYPE 'X'

EXTERIOR FINISHES

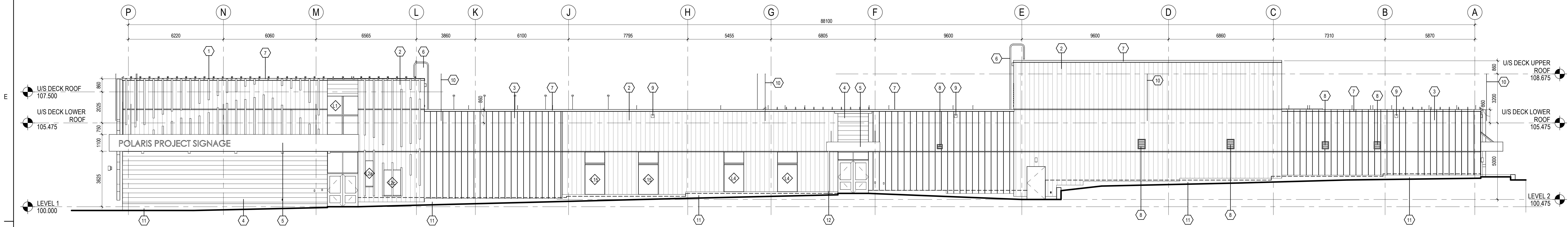
Key Value	Keynote Text
1	STAINED CEDAR - TIMBER
2	W/ WEST 40300 METAL CLADDING - NATURAL ZINC
3	FORMA STEEL - FORMA LOC 406mm METAL CLADDING - WHITE
4	METALWORK - TRADITIONAL PANEL METAL CLADDING - AUTUMN
5	FIBRE CEMENT BOARD - CHARCOAL
6	ROOF LADDERS - GALVANIZED
7	PRE-FINISHED METAL CAP FLASHING - COLOUR TO MATCH EXTERIOR CLADDING
8	MECHANICAL COVER - COLOUR TO MATCH EXTERIOR CLADDING
9	SCUPPER DETAIL 9/AS11
10	ELECTRICAL - GROUNDING ROD
11	TYPICAL BASE - GALVANIZED METAL PLATE BASE
12	DOWNSPOUT

7	ADDENDUM 02	CT	CO	2024.11.28
6	REISSUED FOR TENDER	GV	CO	2024.09.30
5	ISSUED FOR TENDER	GV	CO	2024.05.06
4	ISSUED FOR CLASS A PRICING SUBMISSION	GV	CO	2024.03.15
3	ISSUED FOR RFP SUBMISSION	GV	CO	2024.03.07
2	ISSUED FOR RFP SUBMISSION	GV	CO	2023.11.25
1	ISSUED FOR DESIGN DEVELOPMENT	GV	CO	2022.10.16

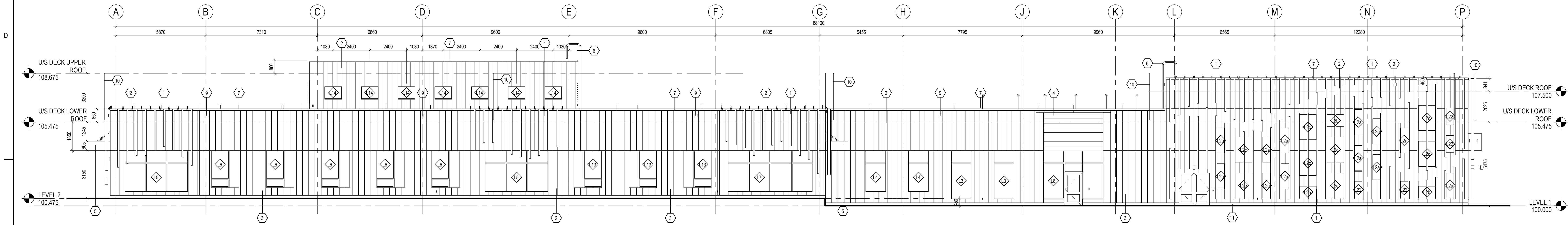
Issued & Revision	By	App'd	YYYY.MM.DD
File Name: N/A	Author	Designer	06/16/17
	Dwn	Dign	YYYY.MM.DD

PRELIMINARY
NOT FOR
CONSTRUCTION

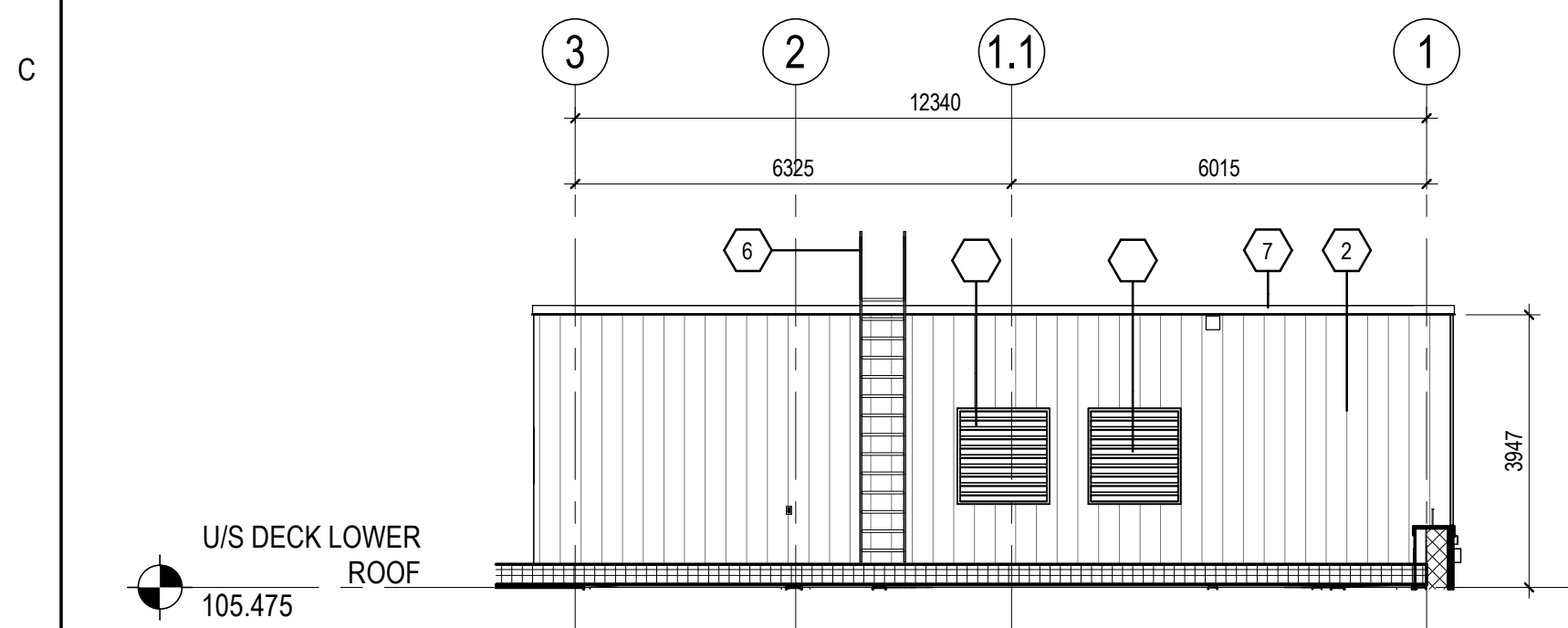
Not for permit, pricing or other official purposes. This document has not been completed or checked and is for general information or comment only.



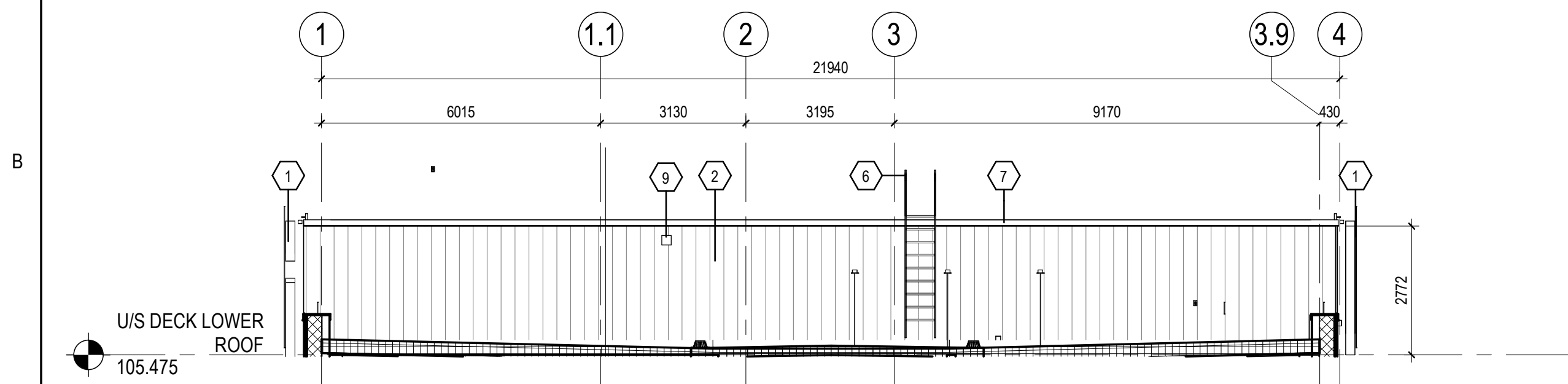
1 ELEVATION - NORTH
A200 1 : 100



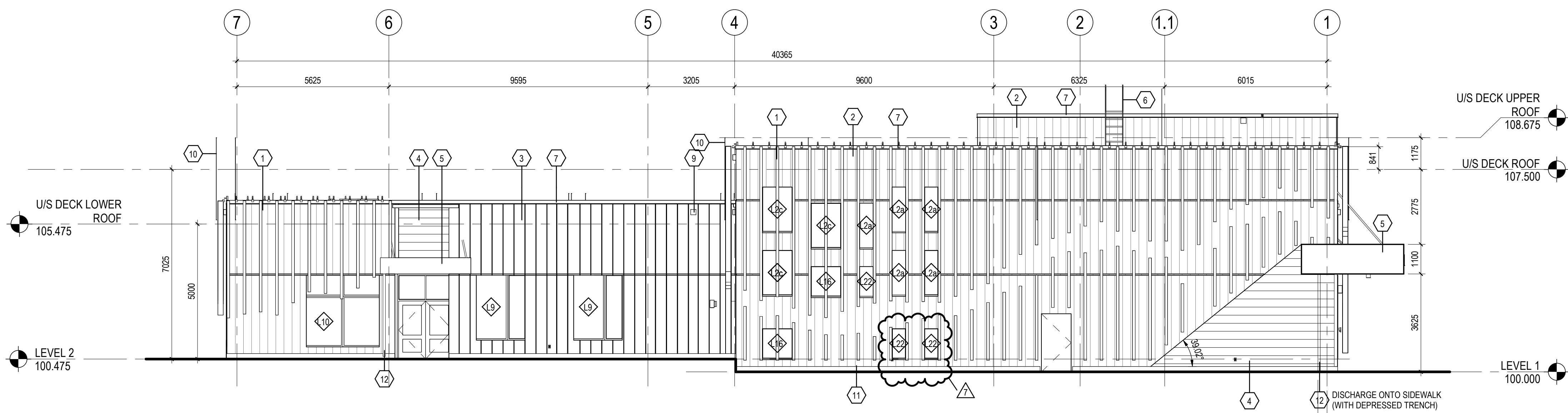
2 ELEVATION - SOUTH
A200 1 : 100



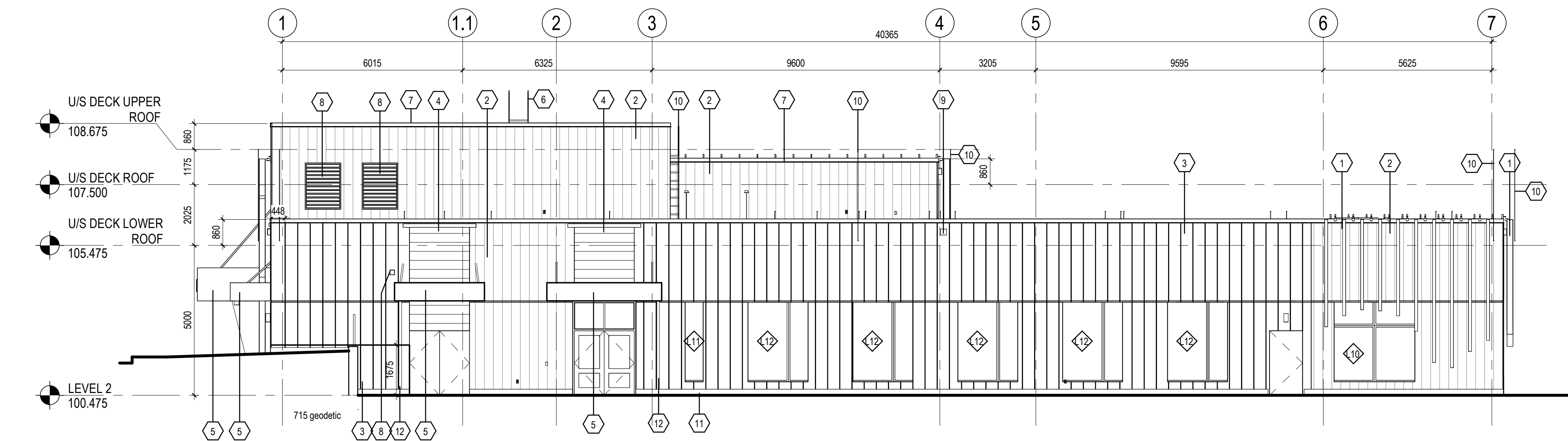
5 ELEVATION - PARTIAL WEST
A200 1 : 100



6 ELEVATION - PARTIAL EAST
A200 1 : 100



3 ELEVATION - EAST
A200 1 : 100

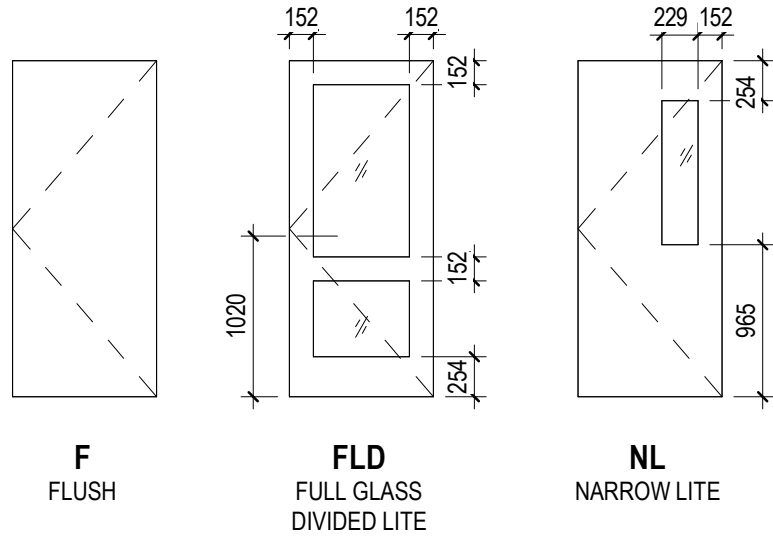


4 ELEVATION - WEST
A200 1 : 100

1/27/2024 10:57:27 AM

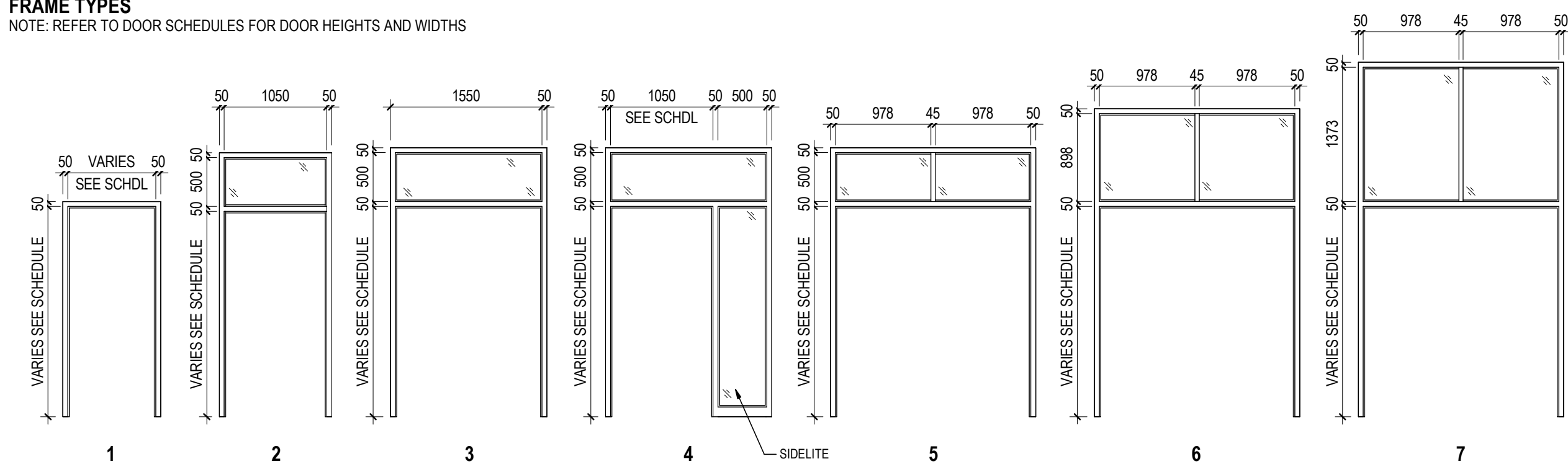
ORIGINAL SHEET (DO NOT

A



DOOR PANEL TYPES

DOOR PANEL TYPES
NOTE: REFER TO DOOR SCHEDULES FOR DOOR HEIGHTS AND WIDTHS



FRAME TYPES

FRAME TYPES
NOTE: REFER TO DOOR SCHEDULES FOR DOOR HEIGHTS AND WIDTHS

TRANSOM AND SIDELIGHT GLAZING:

- STC 30 GLAZING:
 - 3mm GLASS PANE
 - 8mm AIR GAP
 - 3mm GLASS PANE

- STC 35 GLAZING:
 - 5mm GLASS PANE
 - 25mm AIR GAP
 - 5mm GLASS PANE

THE USE A GLAZING WITH THE SAME STC RATING AS THE DOOR ON WHICH IT IS MOUNTED ON. IN THE FOLLOWING, GLAZING COMPOSITIONS ARE PRESENTED SO TO REACH THE STC RATING OF THE SUGGESTED DOORS.

- FOR STC 30 DOOR: 10mm THICK SINGLE GLASS PANE.
- FOR STC 35 DOOR: 10mm THICK SINGLE GLASS PANE OR 8mm THICK LAMINATED SINGLE GLASS PANE.
- FOR STC 40 DOOR: 12mm THICK LAMINATED SINGLE GLASS PANE OR A DOUBLE PANE ASSEMBLY INCLUDING 8mm THICK LAMINATED GLASS PANE + 16mm AIR GAP + 8mm THICK GLASS PANE.

LEGEND

ALUM ALUMINUM
ANOD ANODIZED
HM HOLLOW METAL
HM INSULATED HOLLOW METAL
P PAINT
PL PLASTIC LAMINATE
PSF INSULATED PRESSED STEEL FRAME
PSF PRESSED STEEL FRAME
SCW SOLID CORE WOOD



Stantec Architecture Ltd.
202-107 Main Street
Whitehorse, YT Y1A 2A7
Tel: (867) 433-2400
www.stantec.com

Copyright Reserved

The Contractor shall verify and be responsible for all dimensions. DO NOT scale the drawings - any errors or omissions shall be reported to Stantec without delay. The Copyrights to all designs and drawings are the property of Stantec. Reproduction or use for any purpose other than that authorized by Stantec is forbidden.

Client/Project Logo



Keyplans

Notes

7	ADDENDUM 02	CT	CO	2024.11.28
6	RE-ISSUED FOR TENDER	GV	CO	2024.09.30
5	ISSUED FOR TENDER	GV	CO	2024.08.06
4	ISSUED FOR CLASS A PRICING SUBMISSION	GV	CO	2024.03.15
3	ISSUED FOR RFP SUBMISSION	GV	CO	2024.03.07
2	ISSUED FOR RFP SUBMISSION	GV	CO	2023.11.25
1	ISSUED FOR DESIGN DEVELOPMENT	GV	CO	2022.10.16

Issued & Revision

File Name: N/A	Author	Designer	Checker	6/16/17
	Dwn	Dign	Chk	YYYY.MM.DD

Permit/Seal

PRELIMINARY
NOT FOR
CONSTRUCTION

Not for permit, pricing or other official purposes. This document has not been completed or checked and is for general information or comment only.

Client/Project
Yukon University
Polaris Project

Title
DOOR SCHEDULES

Project No.
144214760

Revision

7

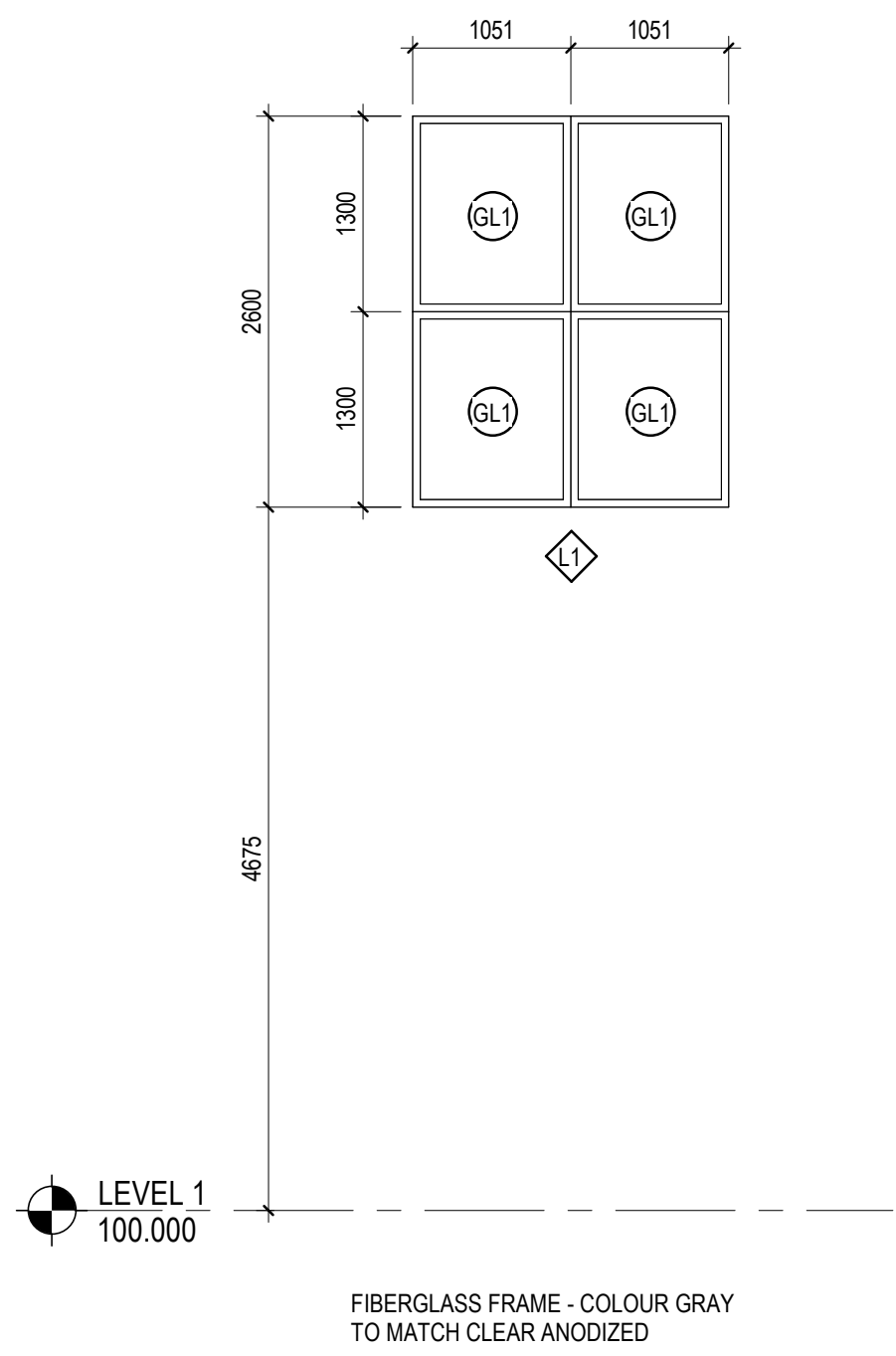
Scale

1 : 48

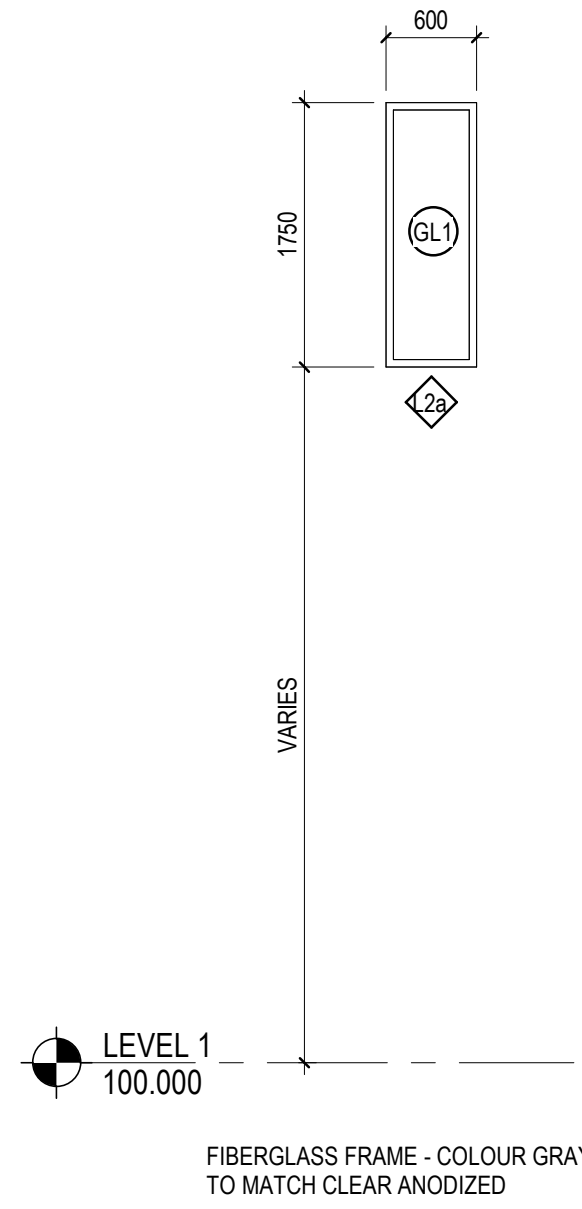
Drawing No.

A600

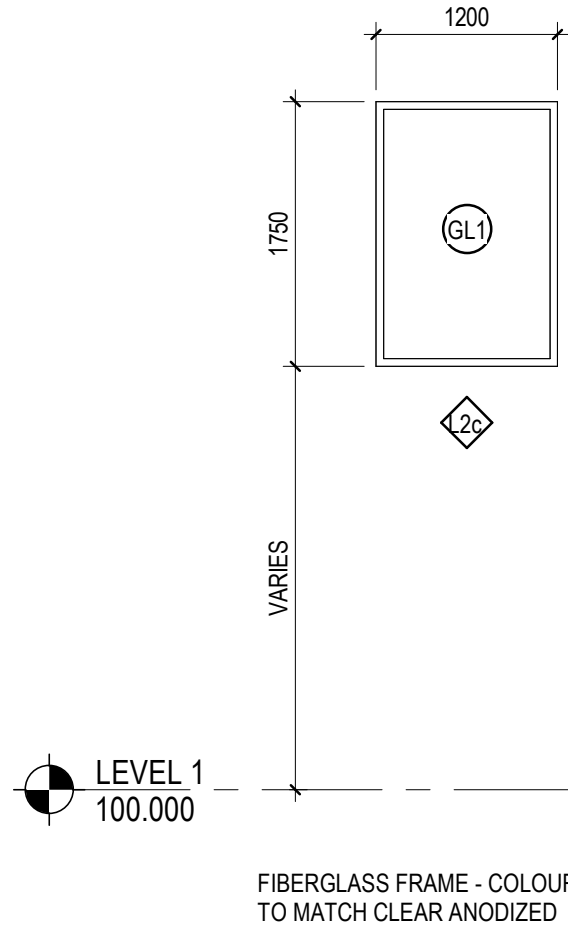
1
2
3
4
5
6
7
E
D
C
B
A
1750/2051 X 1416/1874
ORIGINAL SHEET: 00-A0



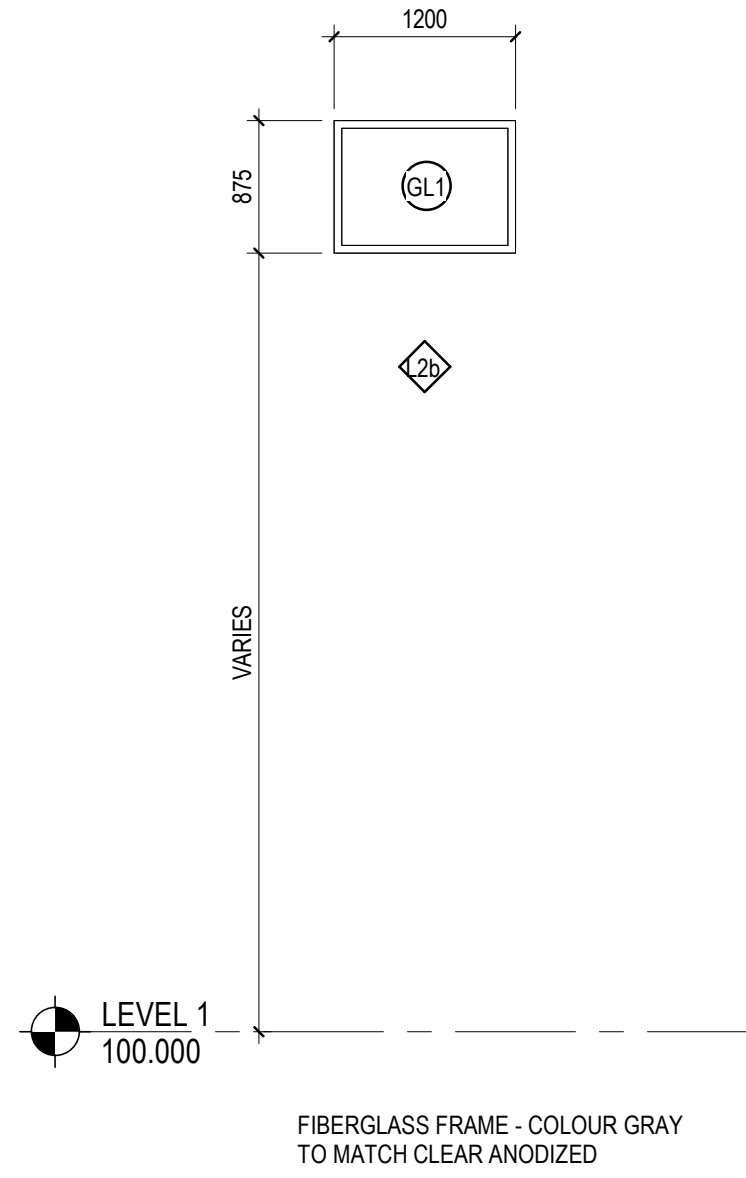
1 L1 - EXT GLAZING
A603 1: 50



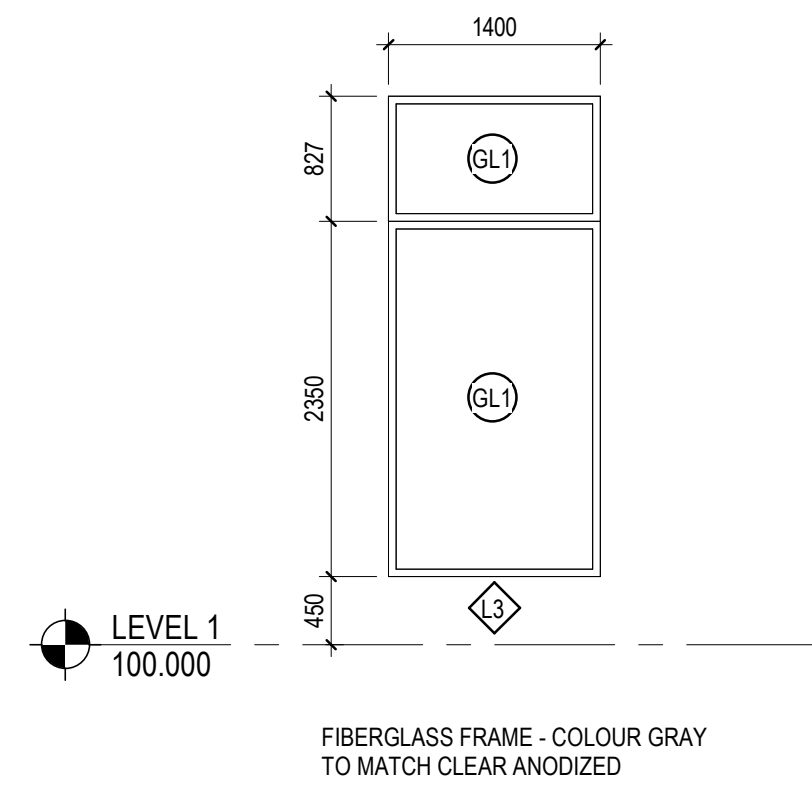
2 L2a - EXT GLAZING
A603 1: 50



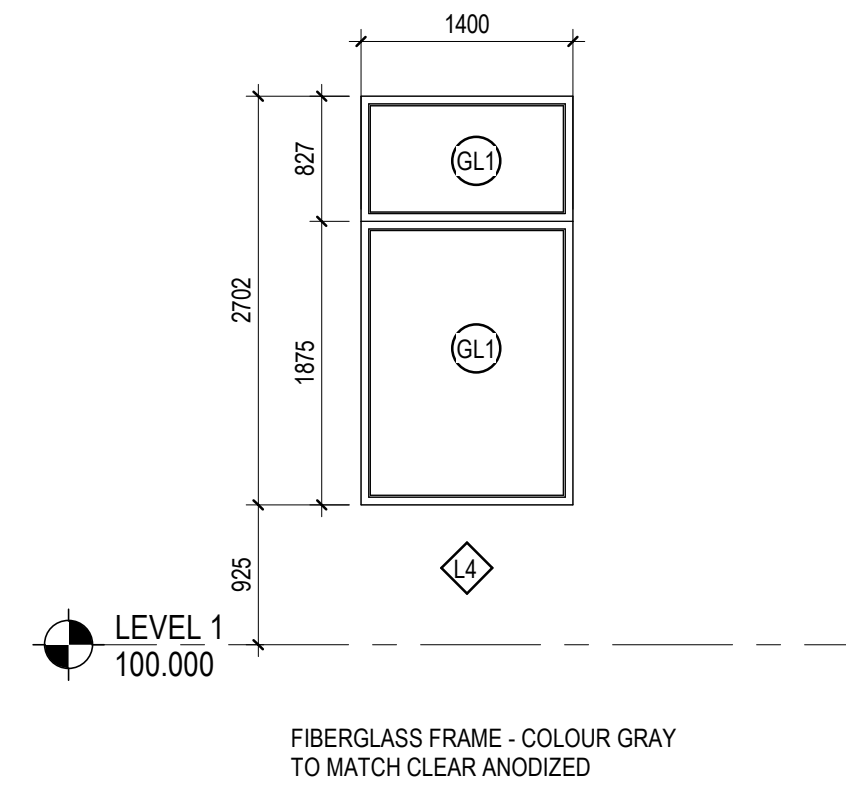
3 L2b - EXT GLAZING
A603 1: 50



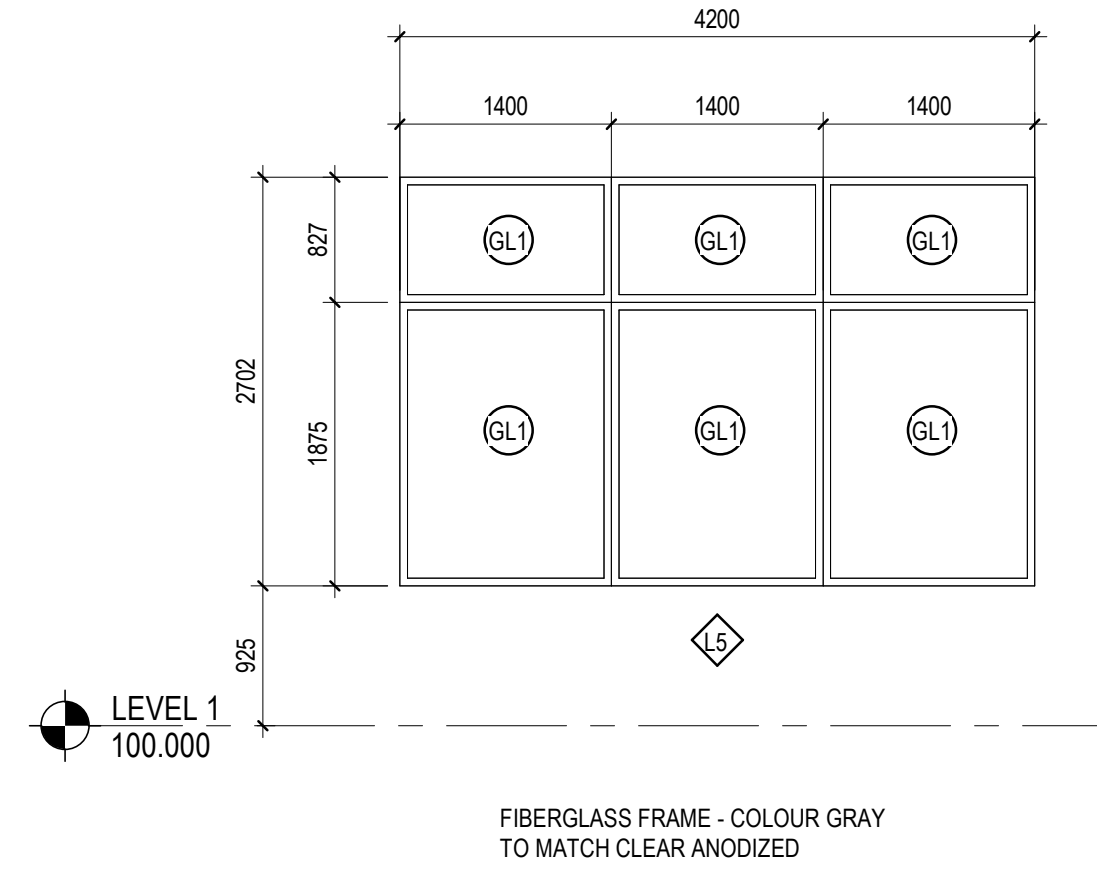
4 L2c - EXT GLAZING
A603 1: 50



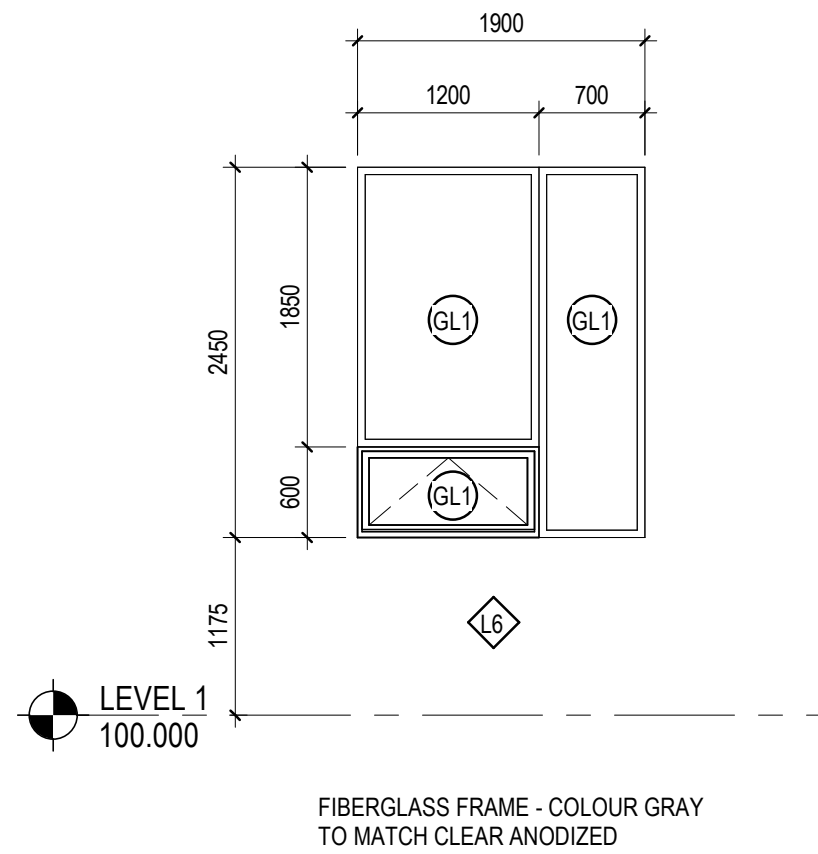
5 L3 - EXT GLAZING
A603 1: 50



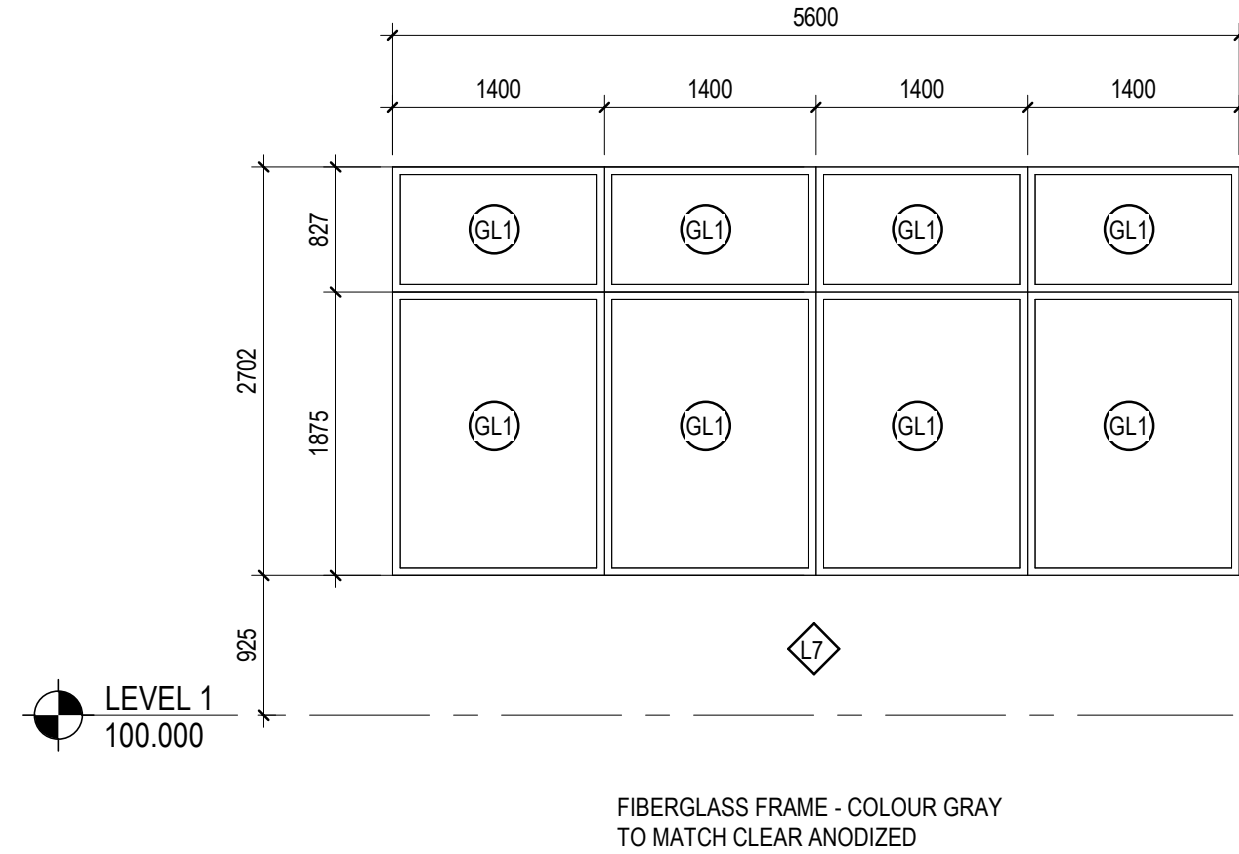
6 L4 - EXT GLAZING
A603 1: 50



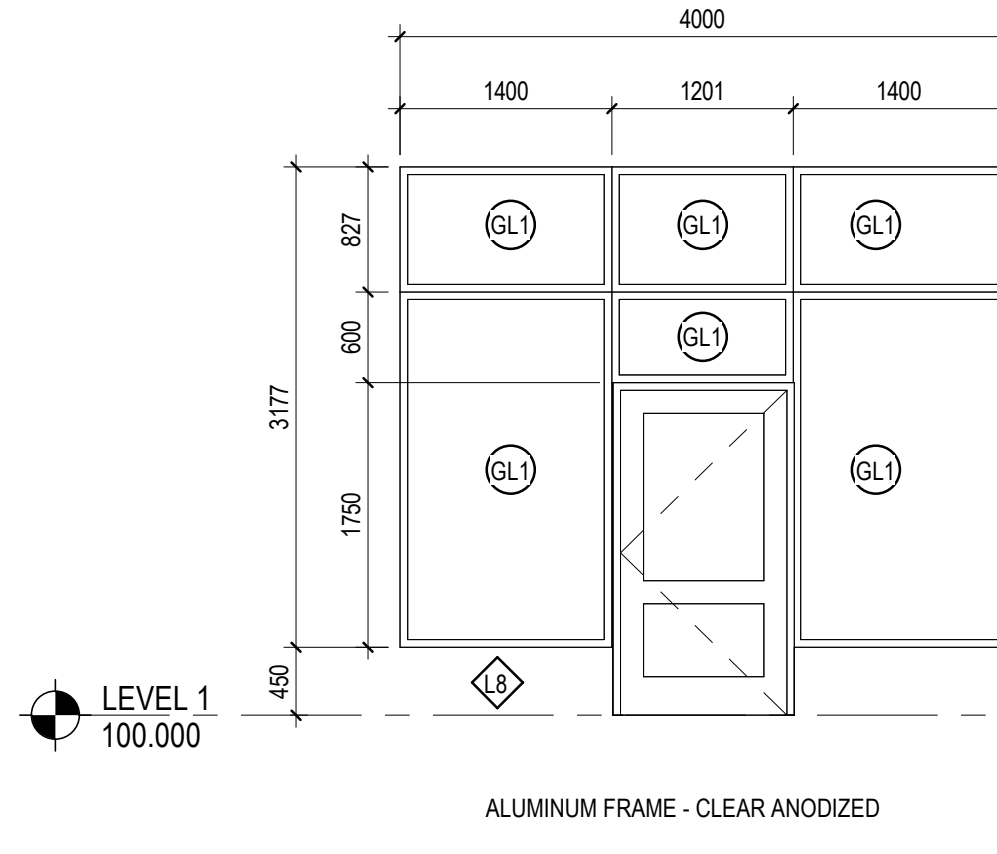
7 L5 - EXT GLAZING
A603 1: 50



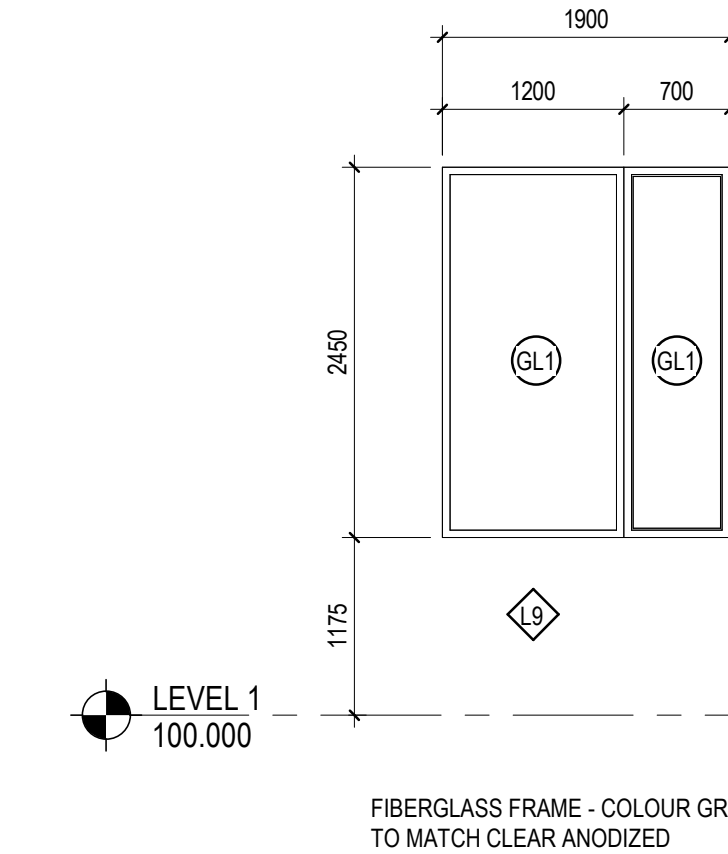
8 L6 - EXT GLAZING
A603 1: 50



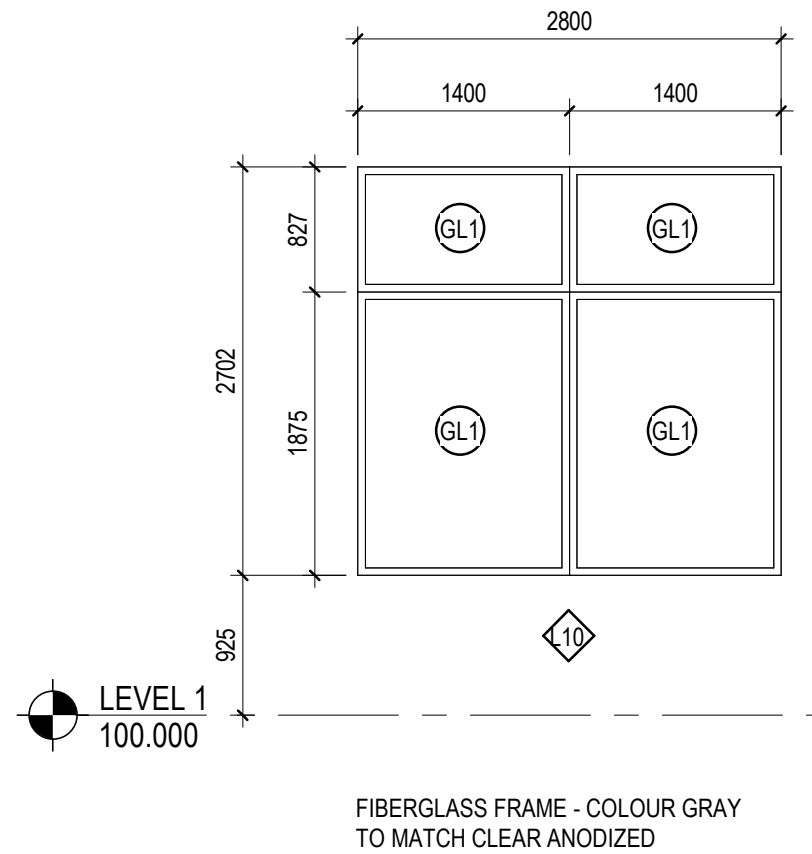
9 L7 - EXT GLAZING
A603 1: 50



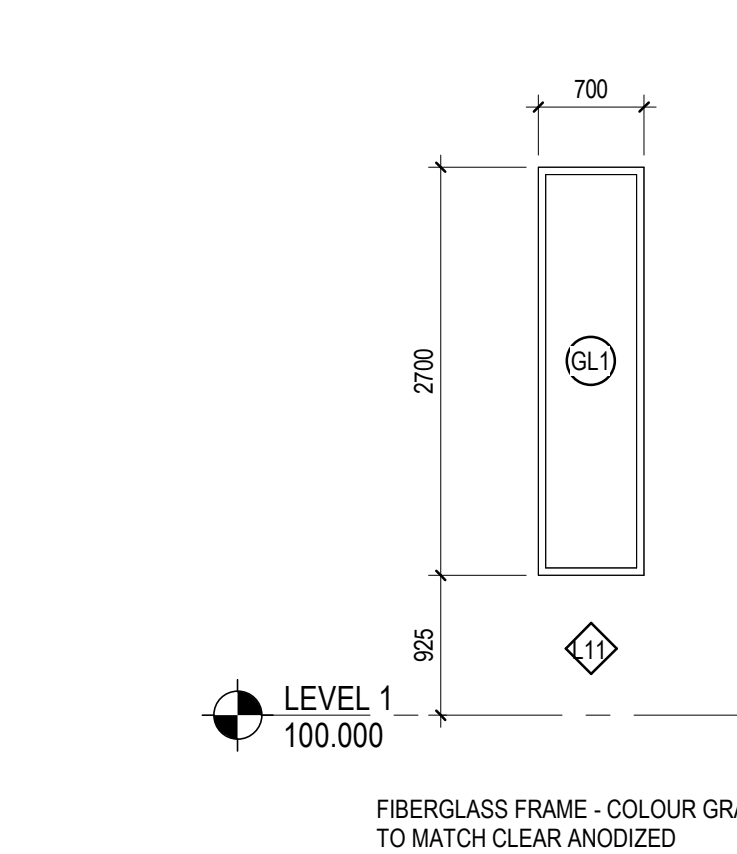
10 L8 - EXT GLAZING
A603 1: 50



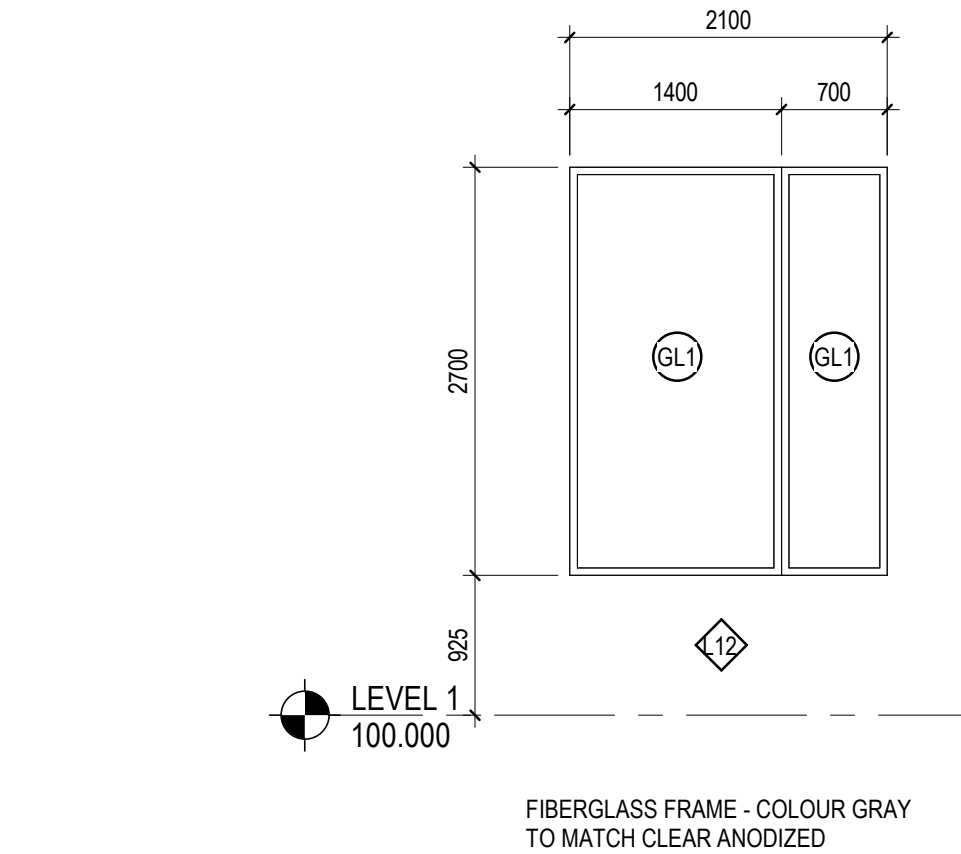
11 L9 - EXT GLAZING
A603 1: 50



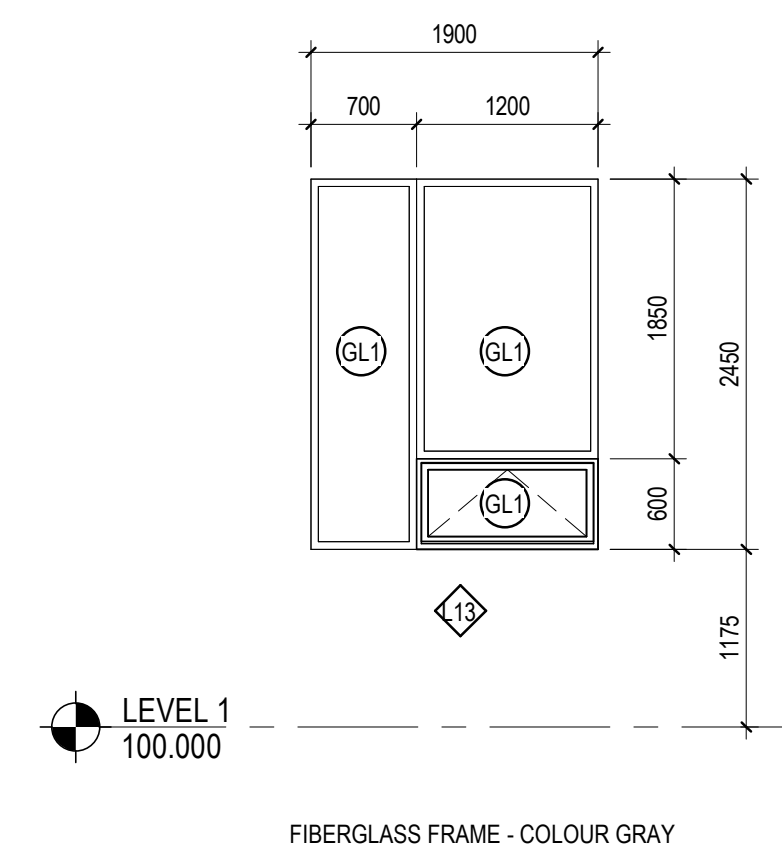
12 L10 - EXT GLAZING
A603 1: 50



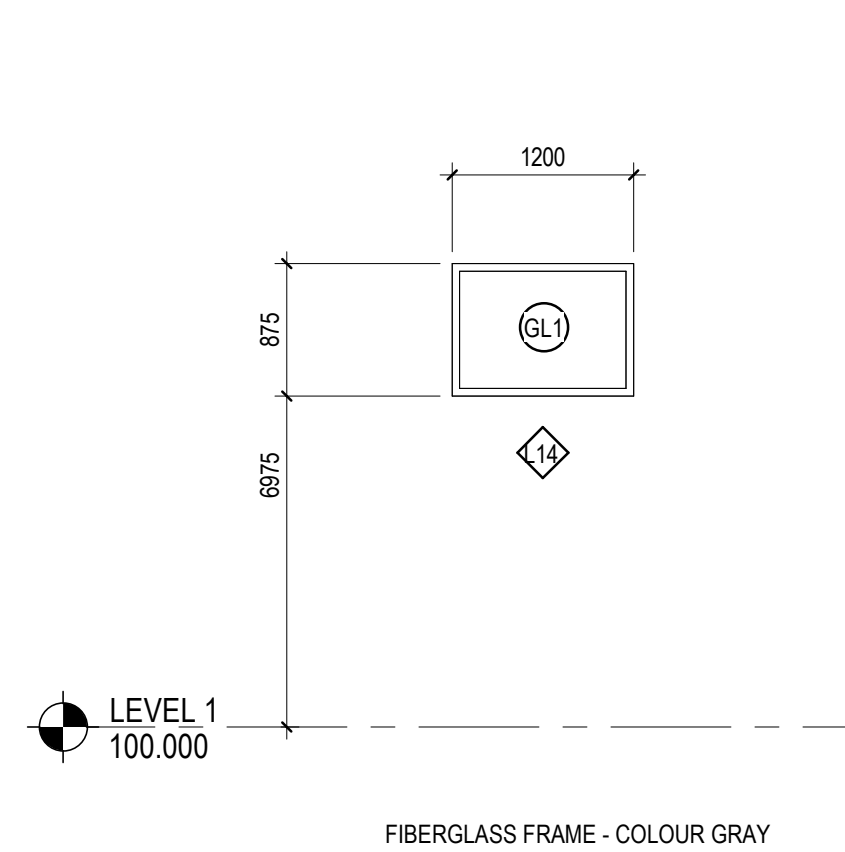
13 L11 - EXT GLAZING
A603 1: 50



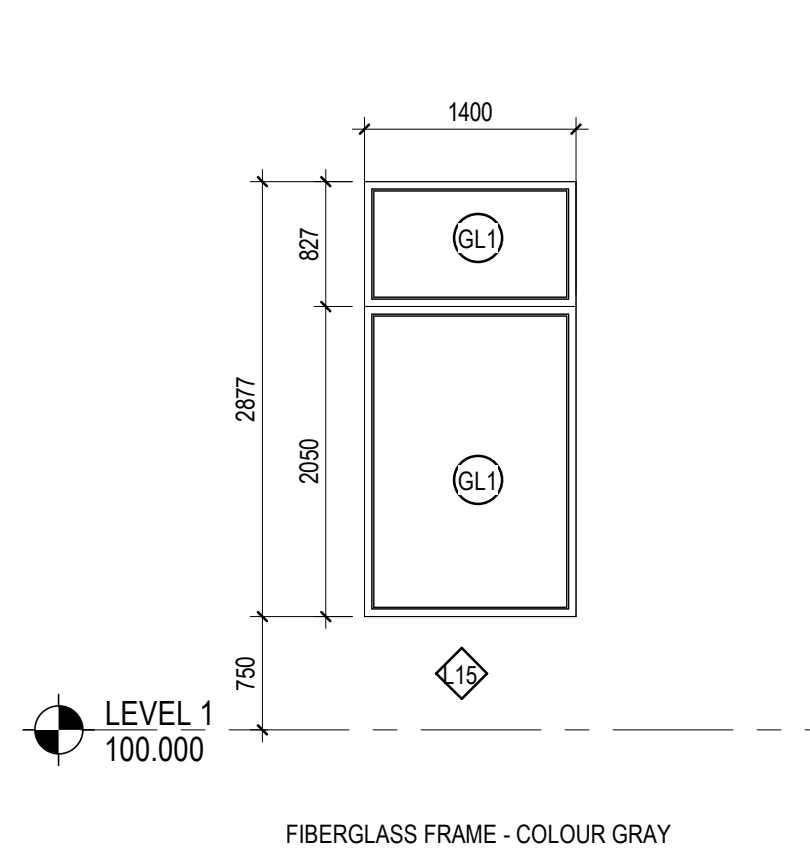
14 L12 - EXT GLAZING
A603 1: 50



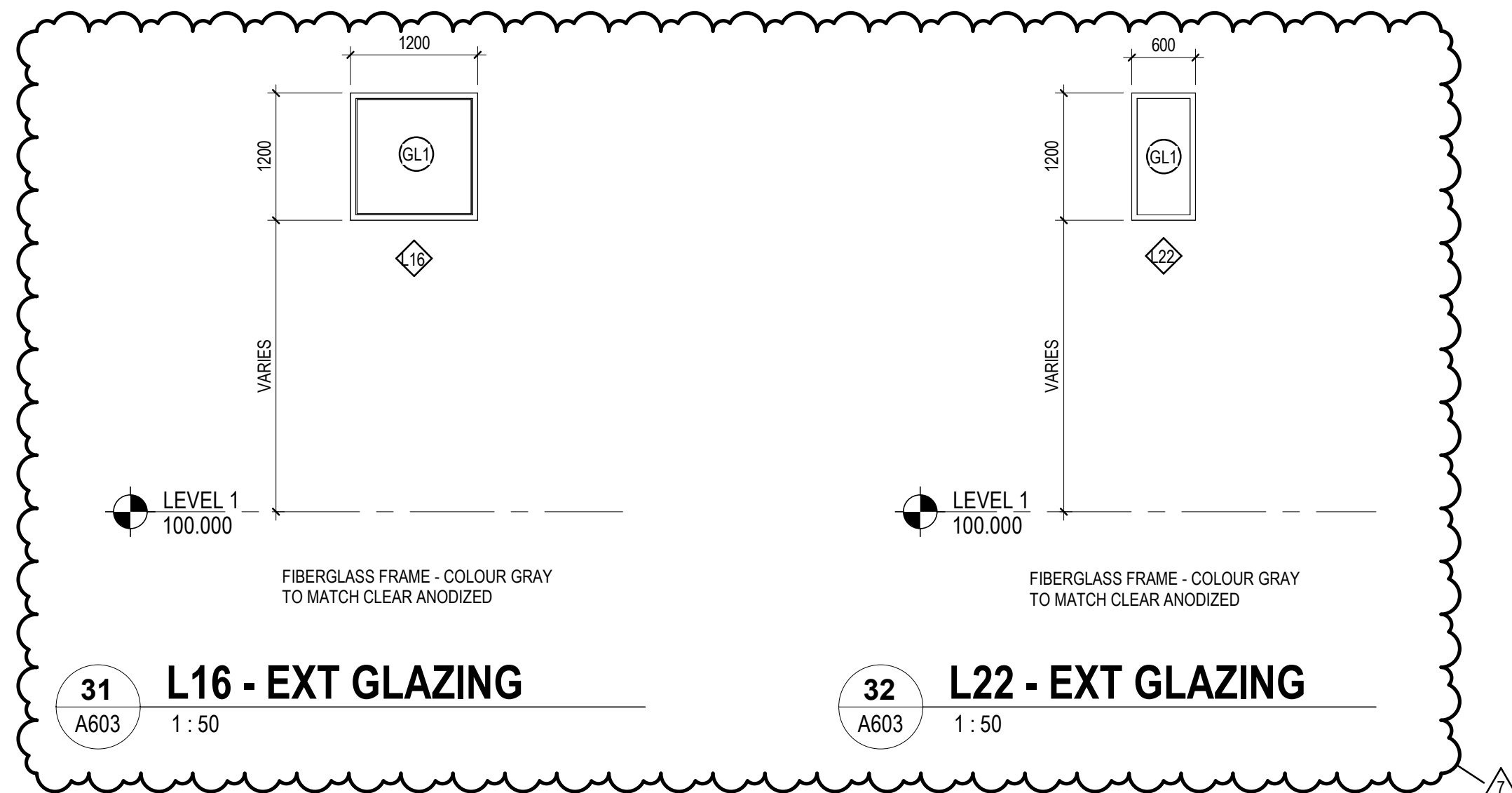
15 L13 - EXT GLAZING
A603 1: 50



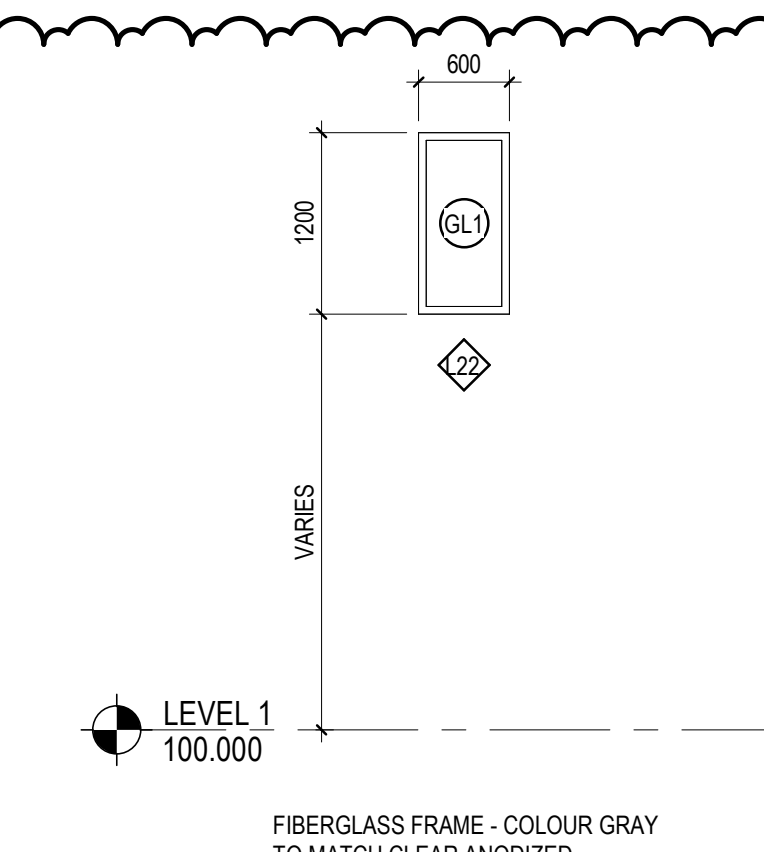
16 L14 - EXT GLAZING
A603 1: 50



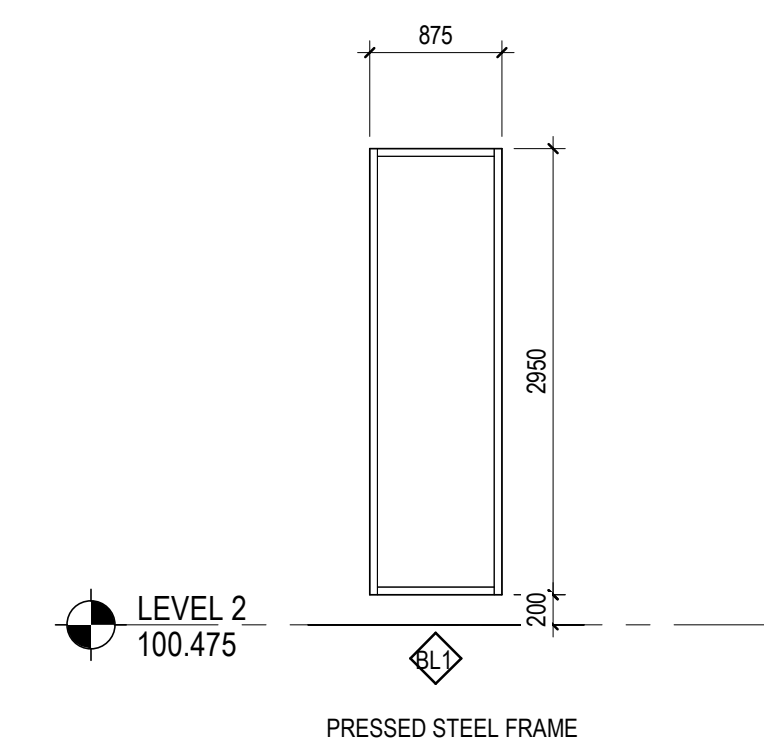
17 L15 - EXT GLAZING
A603 1: 50



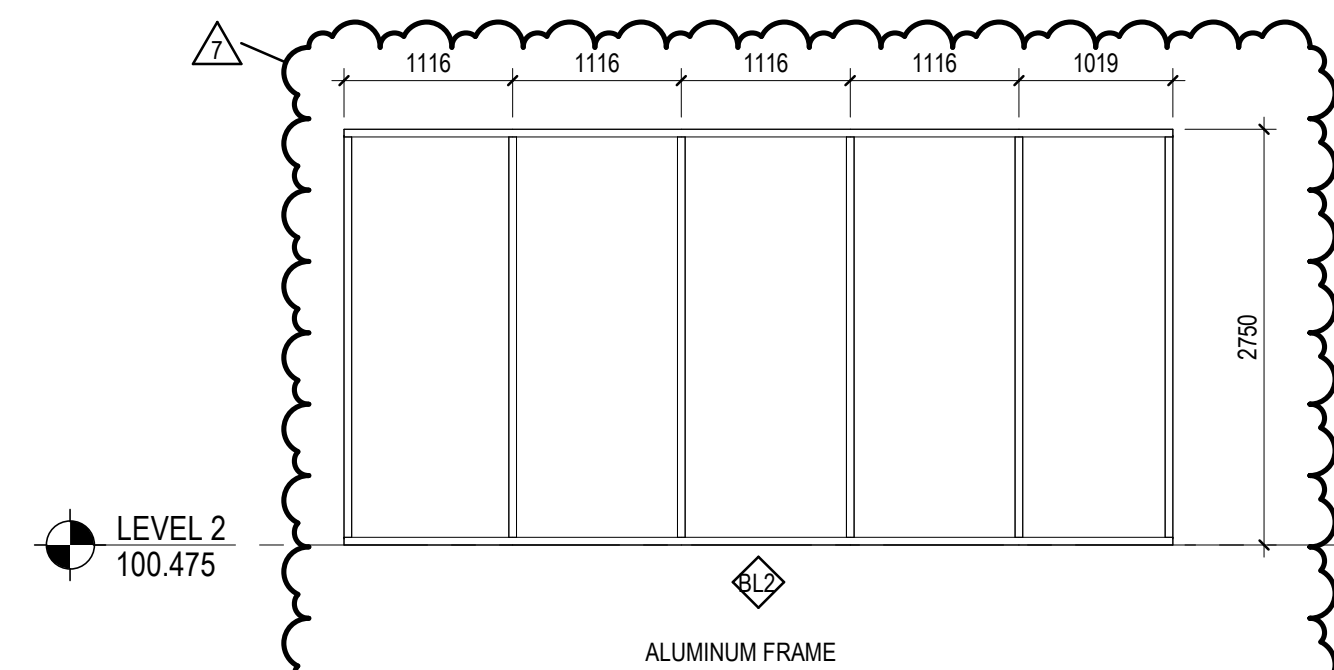
31 L16 - EXT GLAZING
A603 1: 50



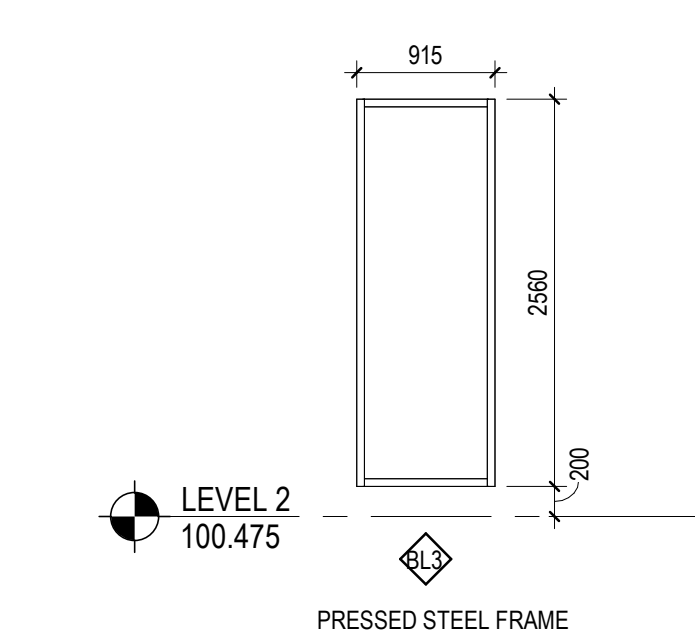
32 L22 - EXT GLAZING
A603 1: 50



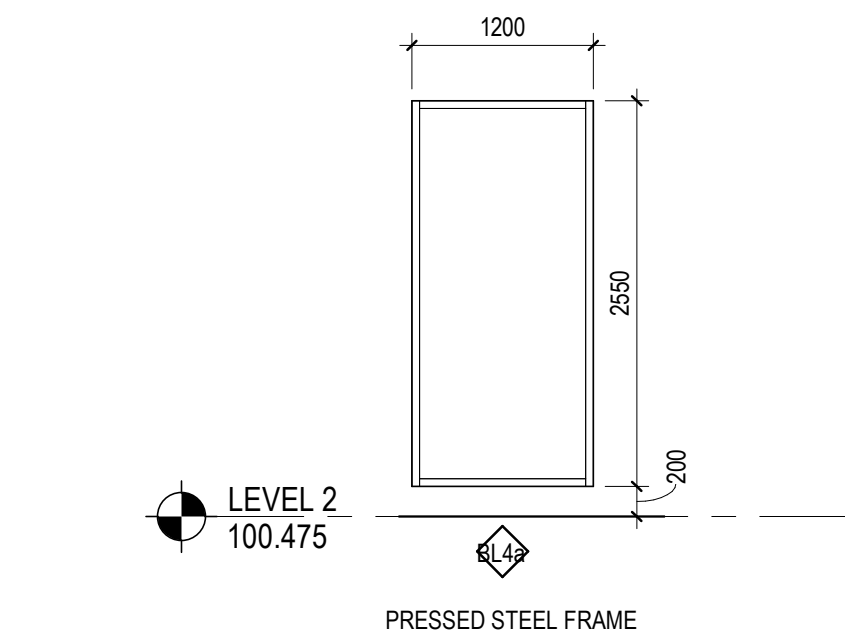
18 BL1 - INT GLAZING
A603 1: 50 STC 45 (RM SB1026 ONLY)



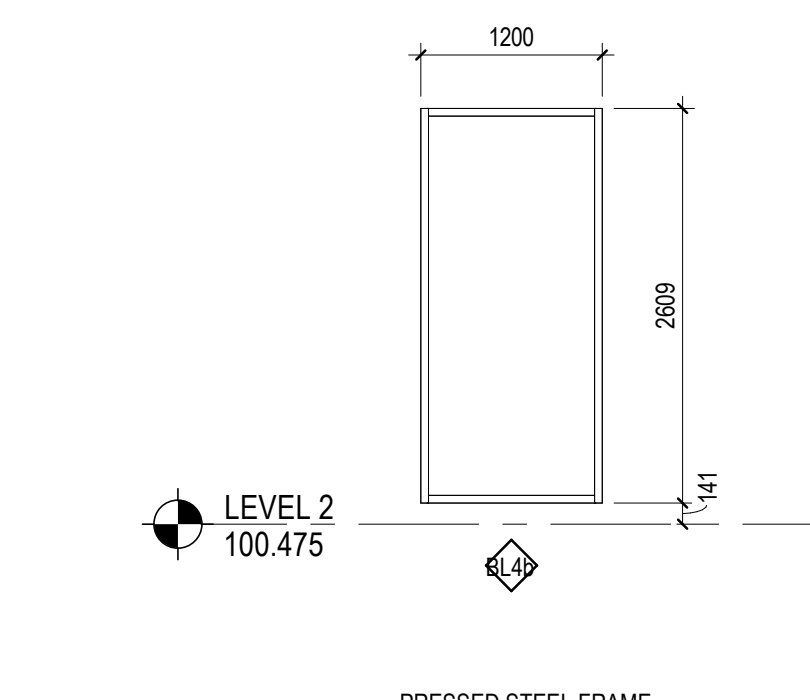
19 BL2 - INT GLAZING
A603 1: 50 STC 45



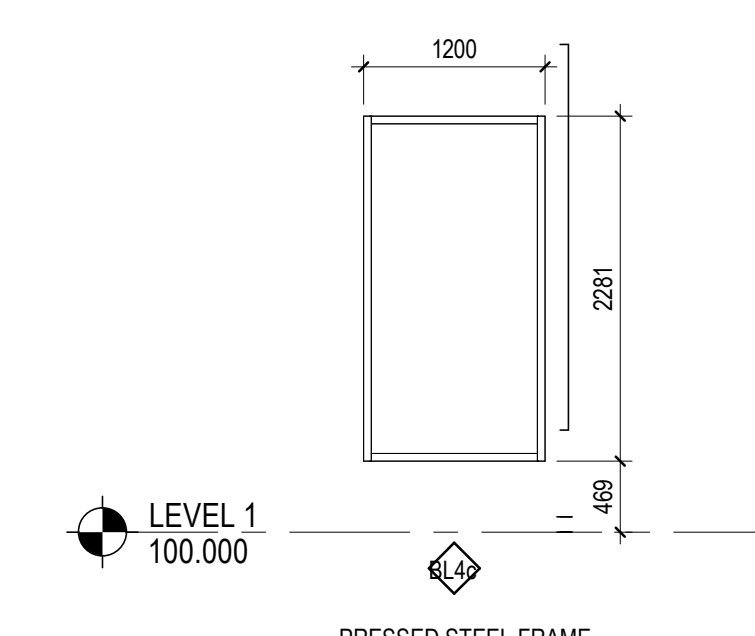
20 BL3 - INT GLAZING
A603 1: 50 STC 45



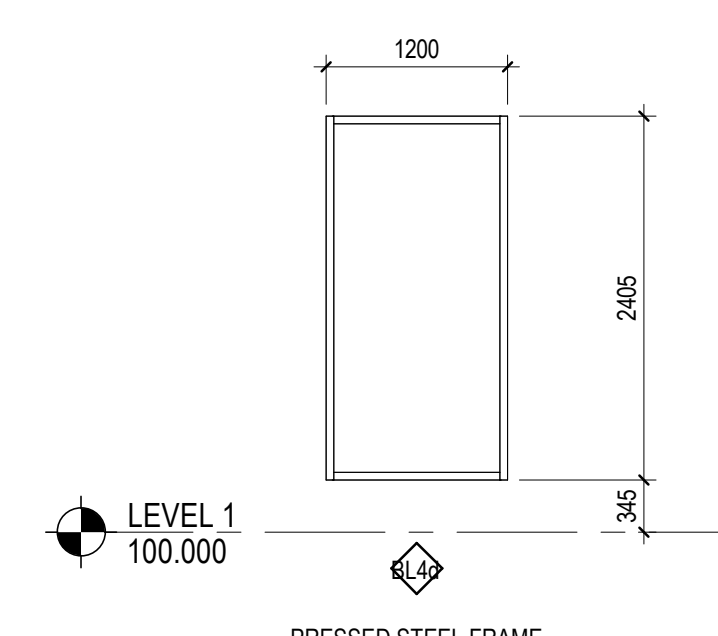
21 BL4a - INT GLAZING
A603 1: 50 STC 45



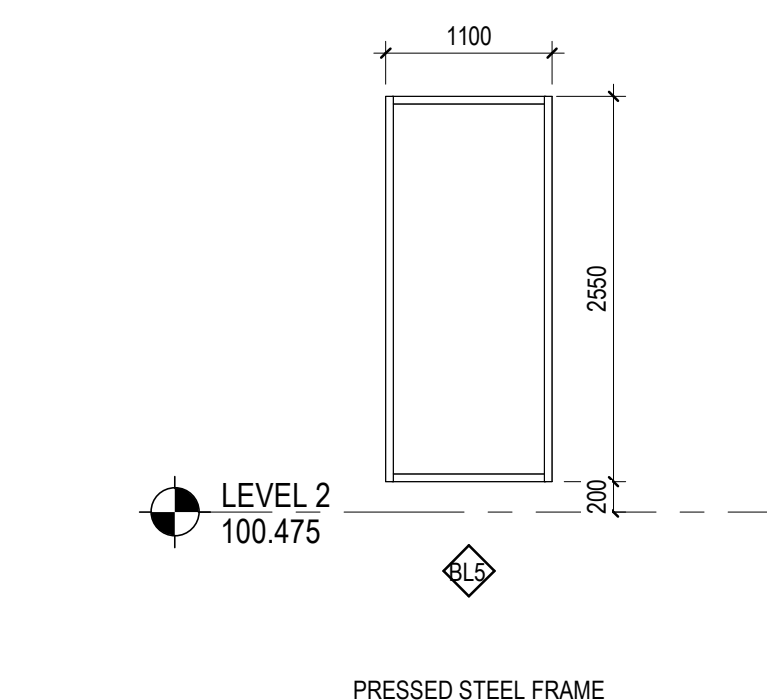
22 BL4b - INT GLAZING
A603 1: 50 STC 45



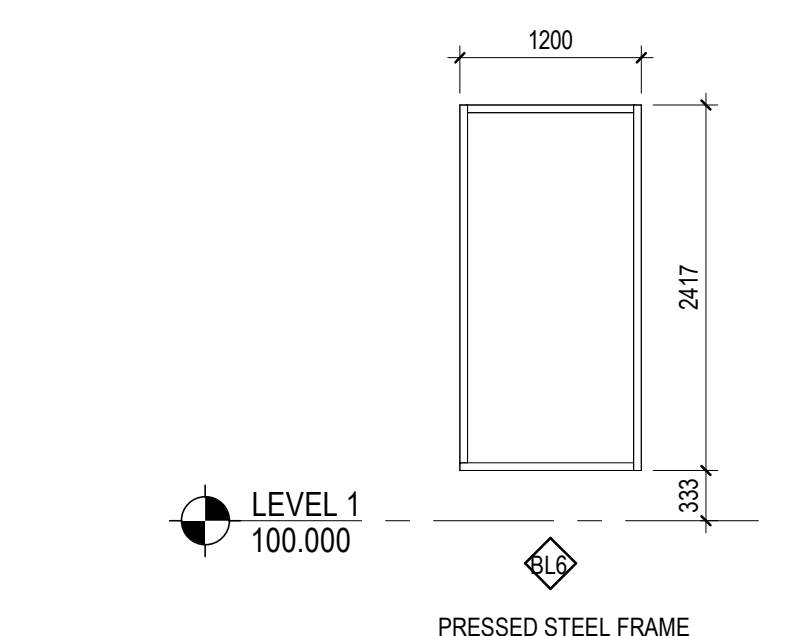
23 BL4c - INT GLAZING
A603 1: 50 STC 45



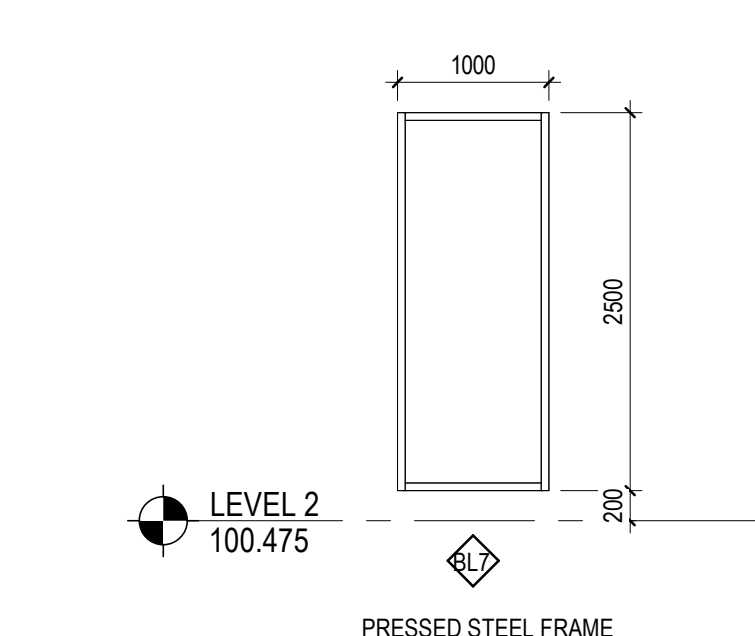
24 BL4d - INT GLAZING
A603 1: 50 STC 45



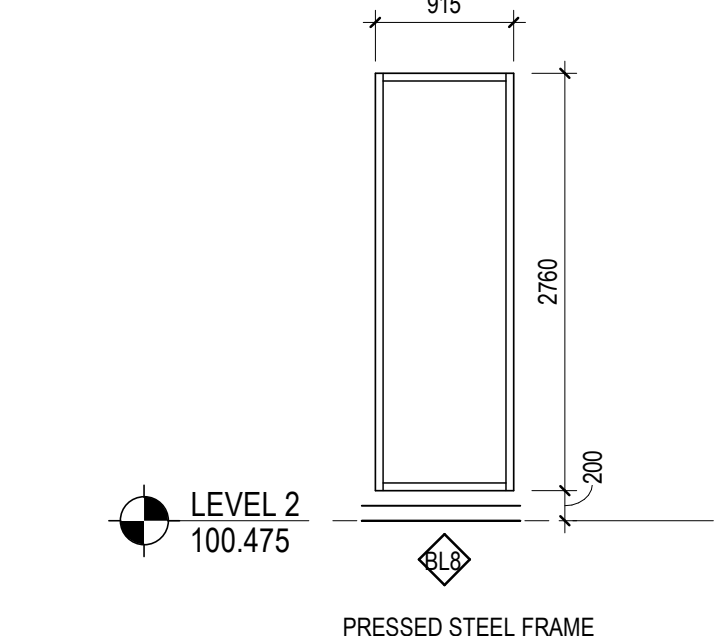
25 BL5 - INT GLAZING
A603 1: 50 STC 45



26 BL6 - INT GLAZING
A603 1: 50 STC 45

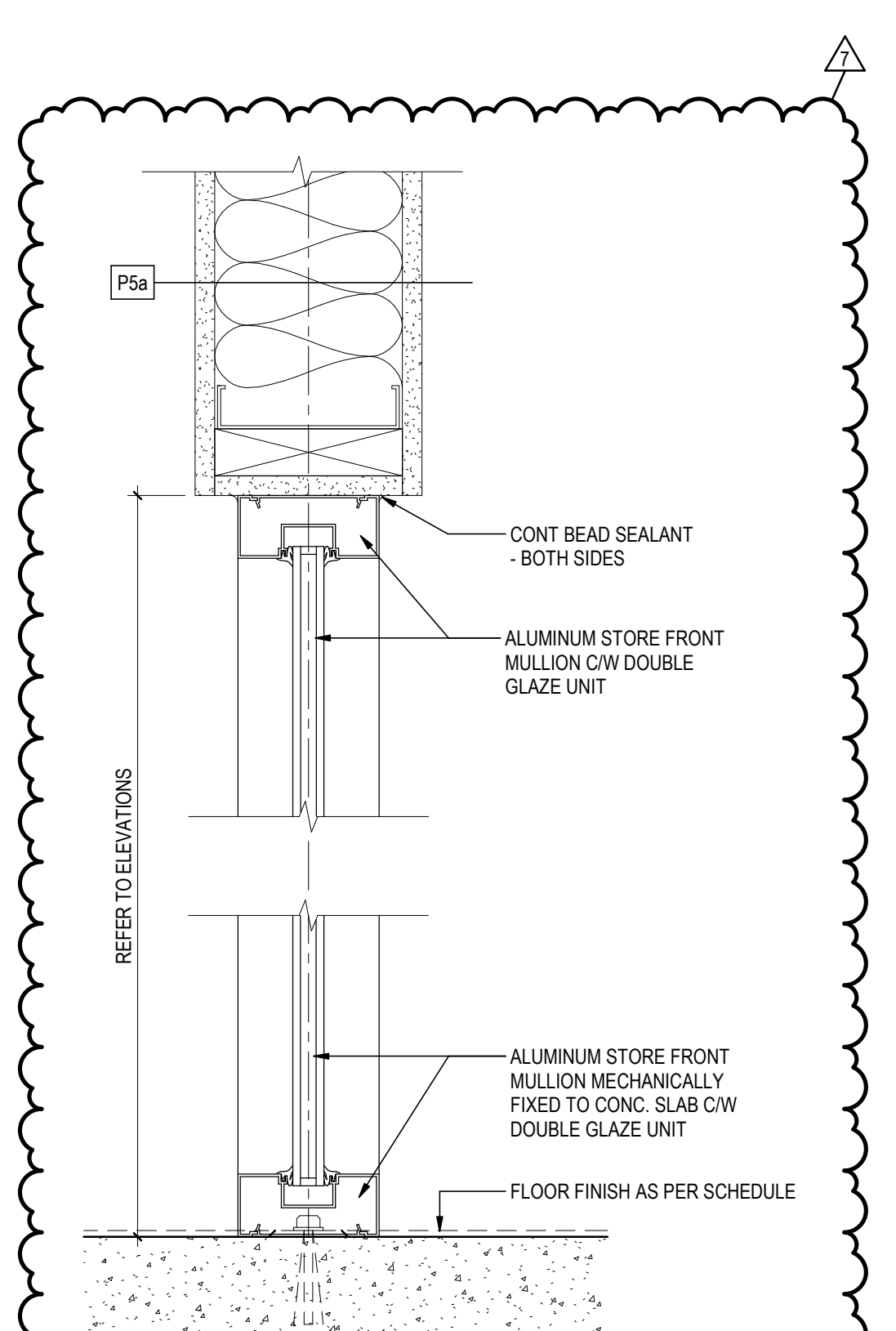
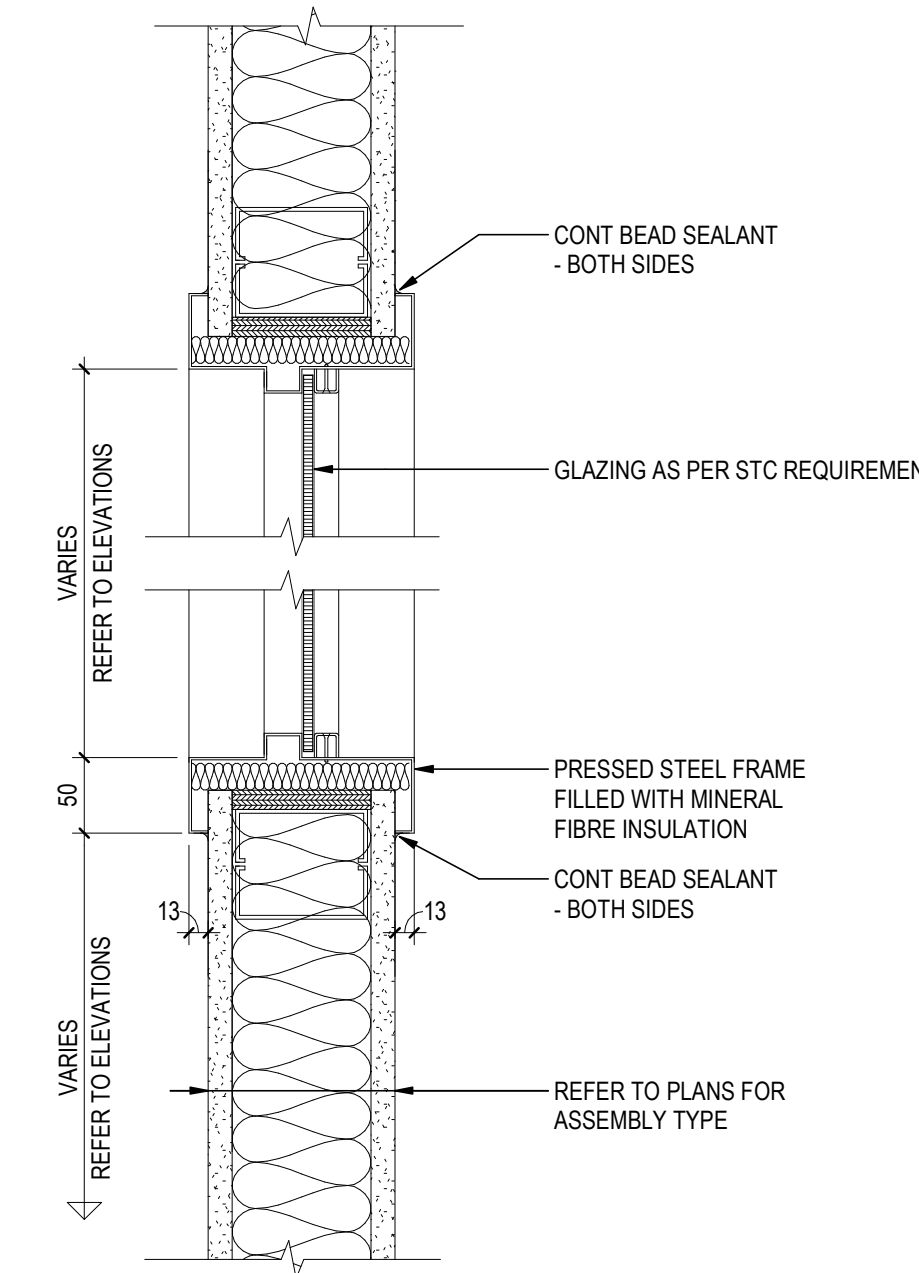


27 BL7 - INT GLAZING
A603 1: 50 STC 30 STC 45 (RM SB1053 ONLY)



28 BL8 - INT GLAZING
A603 1: 50 STC 45

29 TYPICAL FRAMED INT GLAZING DETAIL
A603 1: 5



30 BL2 - INT GLAZING DETAIL
A603 1: 5

GLAZING LEGEND

GL1 - EXTERIOR INSULATED GLAZING UNIT FOR EXTERIOR WINDOWS AND DOORS

- EXTERIOR LITE: GREY TINTED TEMPERED GLASS
- AIR SPACE: 13MM 90% ARGON FILLED
- INTERMEDIATE LITE: CLEAR ANNEALED
- AIR SPACE: 13MM 90% ARGON FILLED
- INTERIOR LITE: CLEAR TEMPERED WITH LOW E COATING ON INS

GENERAL NOTES

1. CONFIRM WINDOW DIMENSIONS ON SITE
2. ALL WINDOWS ARE TO BE TRIPLE GLAZED REGARDLESS OF DETAILS SHOWING DOUBLE GLAZED UNITS
3. REFER TO FINISHES FLOOR PLAN FOR GLAZING FILM LOCATIONS (GL-4) ON ALL BORROWED LIGHTS (BL4)

NOTE: ALL PRESSED STEEL WINDOW FRAMES TO BE PAINTED P3-GS UNLESS NOTED OTHERWISE.

INTERIOR GLAZING:

- STC 30 GLAZING:
 - 3mm TEMPERED GLASS PANE
 - 8mm AIR GAP
 - 3mm TEMPERED GLASS PANE
- STC 35 GLAZING:
 - 5mm TEMPERED GLASS PANE
 - 25mm AIR GAP
 - 5mm TEMPERED GLASS PANE
- STC 45 GLAZING:
 - 6mm LAMINATED GLASS PANE
 - 25mm AIR GAP
 - 5mm TEMPERED GLASS PANE
- NON STC INTERIOR GLAZING:
 - 6mm TEMPERED GLASS WITH NO INSULATED FRAME

7	ADDENDUM 02	CT	CO	2024.11.28
6	REISSUED FOR TENDER	GV	CO	2024.09.30
5	ISSUED FOR TENDER	GV	CO	2024.08.06
4	ISSUED FOR CLASS A PRICING SUBMISSION	GV	CO	2024.03.15
3	ISSUED FOR RFS SUBMISSION	GV	CO	2024.03.07
2	ISSUED FOR RFS SUBMISSION	GV	CO	2023.10.25
1	ISSUED FOR DESIGN DEVELOPMENT	GV	CO	2022.10.16

Issued & Revision	By	App'd	YYYY.MM.DD
File Name: N/A	Author	Designer	Checker
	Dwn.	Dign.	CHK'd

Permit/Seal

PRELIMINARY NOT FOR CONSTRUCTION

Not for permit, pricing or other official purposes. This document has not been completed or checked and is for general information or comment only.

Client/Project
Yukon University
Polaris Project

Title
WINDOW ELEVATIONS

Project No.
144214760

Revision

7

Scale
As indicated

Drawing No.

A603